

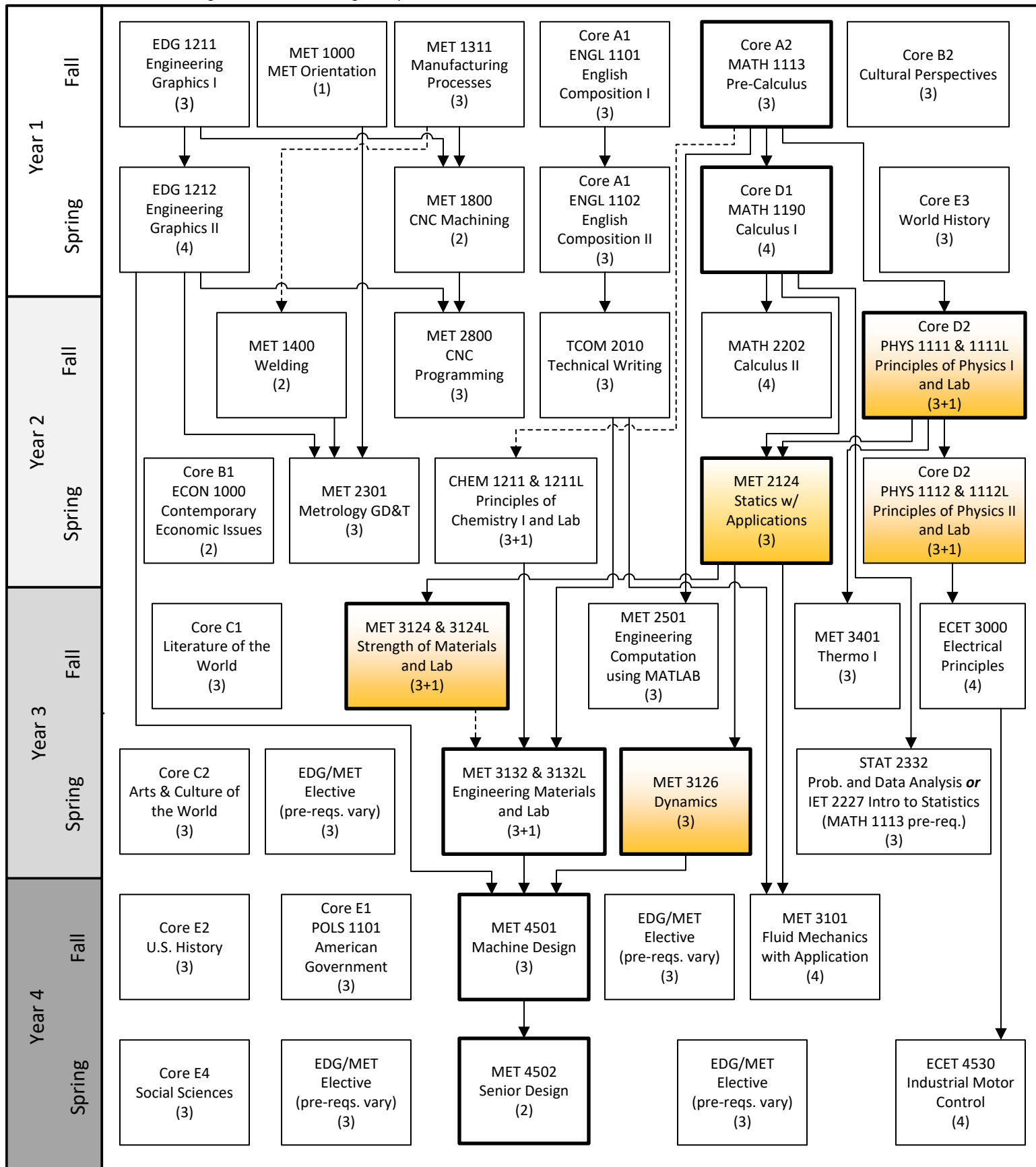


B.S. Mechanical Engineering Technology 2022-2023 Flowchart

Trigonometry Based Physics

KENNESAW STATE UNIVERSITY

Disclaimer: Although we have made every effort for this flowchart to be free of errors, it cannot be guaranteed correct for all students. See DegreeWorks for official degree requirements.



→ Pre-requisite
 - - - - - → Can be taken concurrently

Critical Path
 (Take these as soon as you can.)

Specific for Trigonometry Based MET