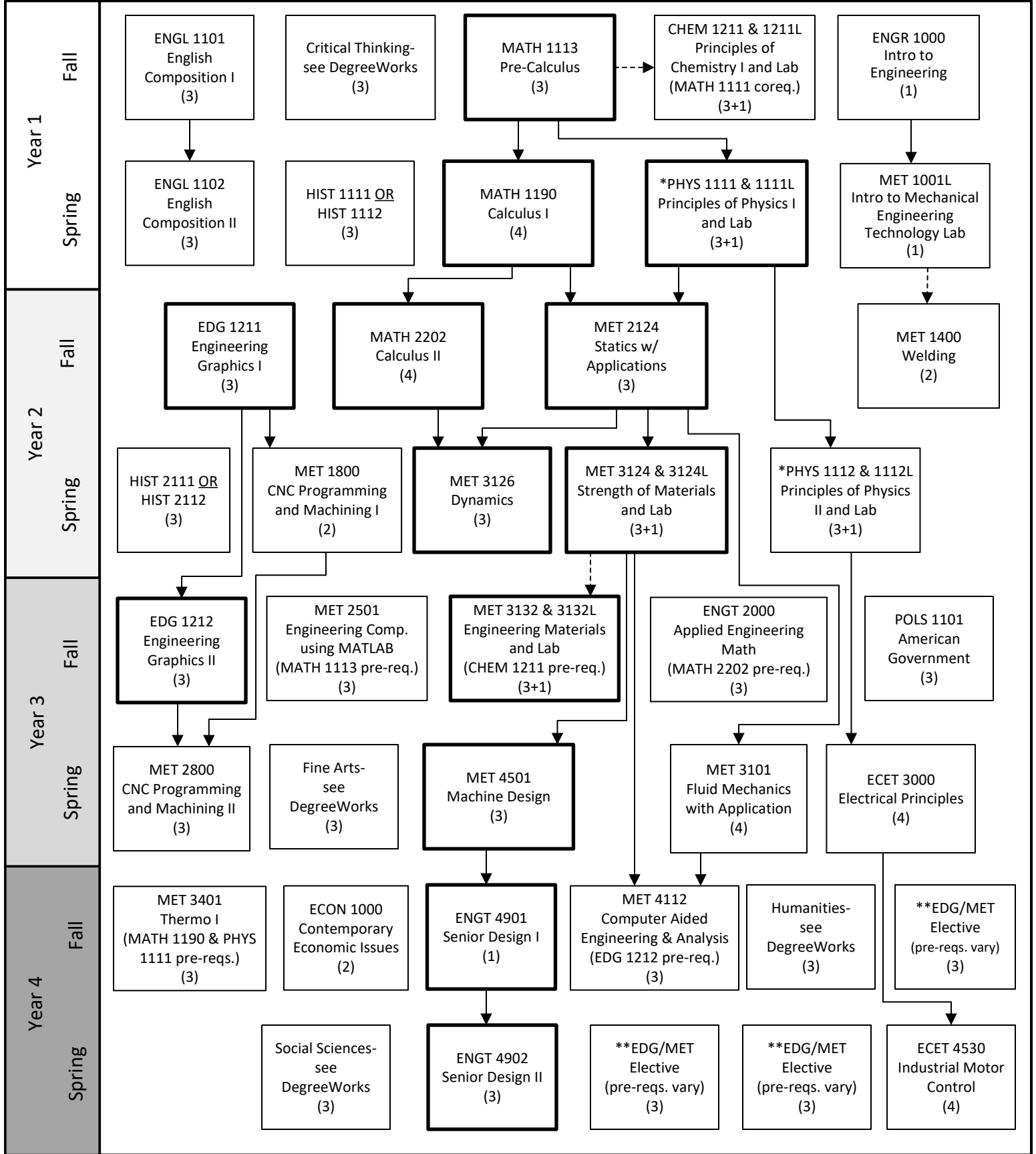




B.S. Mechanical Engineering Technology 2024-2025 Flowchart

Disclaimer: Although we have made every effort for this flowchart to be free of errors, it cannot be guaranteed correct for all students. See DegreeWorks for official degree requirements.



→ Pre-requisite
 - - - - - Can be taken concurrently

Critical Path
 (Take these as soon as you can.)

*Note: PHYS 2211/2211L & PHYS 2212/2212L also satisfy the requirements.
 **Any Appropriate 3 or 4 credit hour MET/EDG Elective course is acceptable. Please pay attention to the concentration requirements found at catalog.kennesaw.edu or Degree Works. (Check your Degree Works for a list of approved courses and speak with your assigned academic advisor)