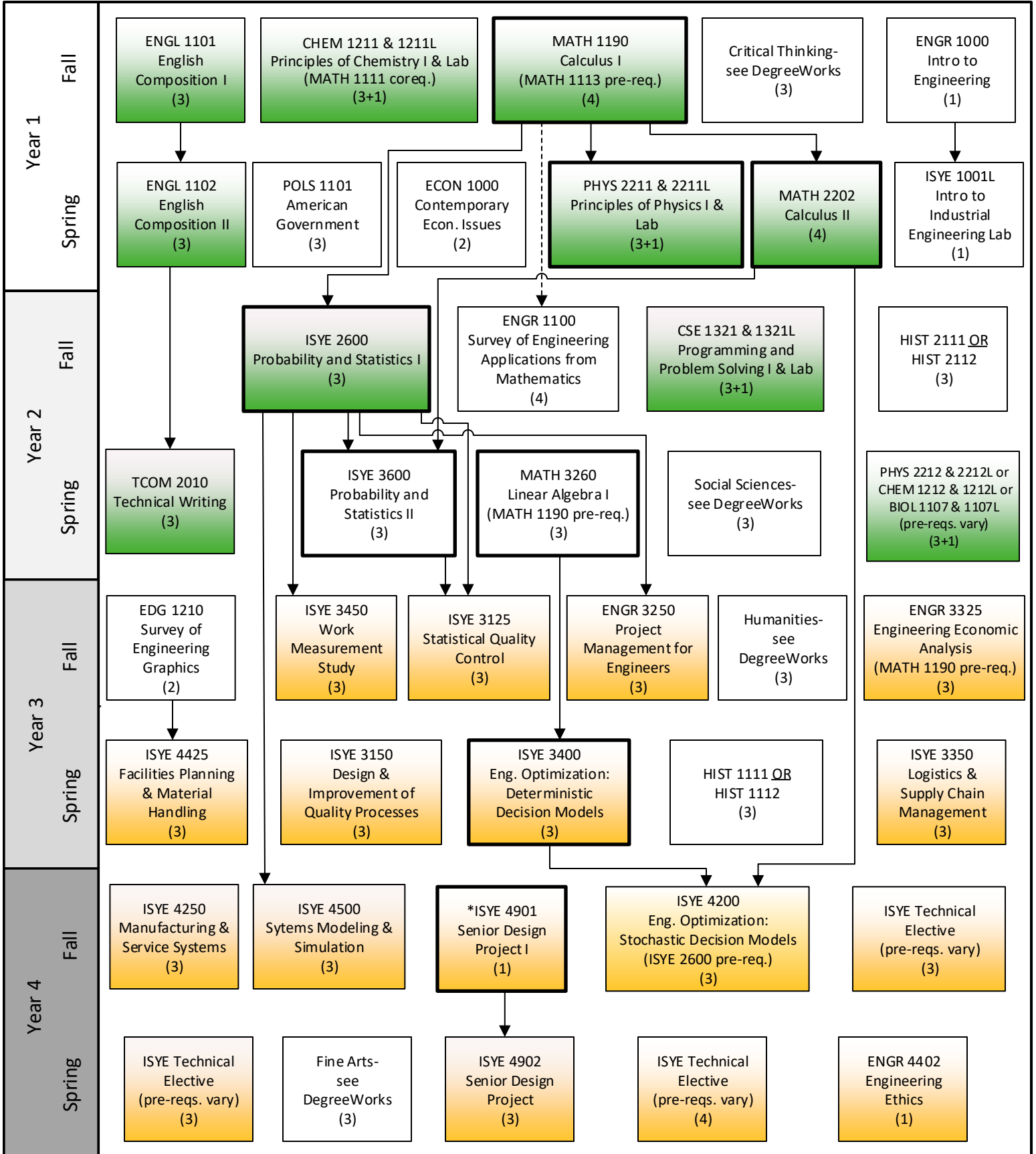




KENNESAW STATE UNIVERSITY

B.S. Industrial and Systems Engineering: Industrial Concentration 2024-2025 Flowchart

Disclaimer: Although we have made every effort for this flowchart to be free of errors, it cannot be guaranteed correct for all students. See DegreeWorks for official degree requirements.



→ Pre-requisite

- - - - - Can be taken concurrently

*ISYE 4901 is only offered in summer and fall

Critical Path
(Take these courses as soon as you can.)

Needed to apply for Engineering Standing

Requires Engineering Standing