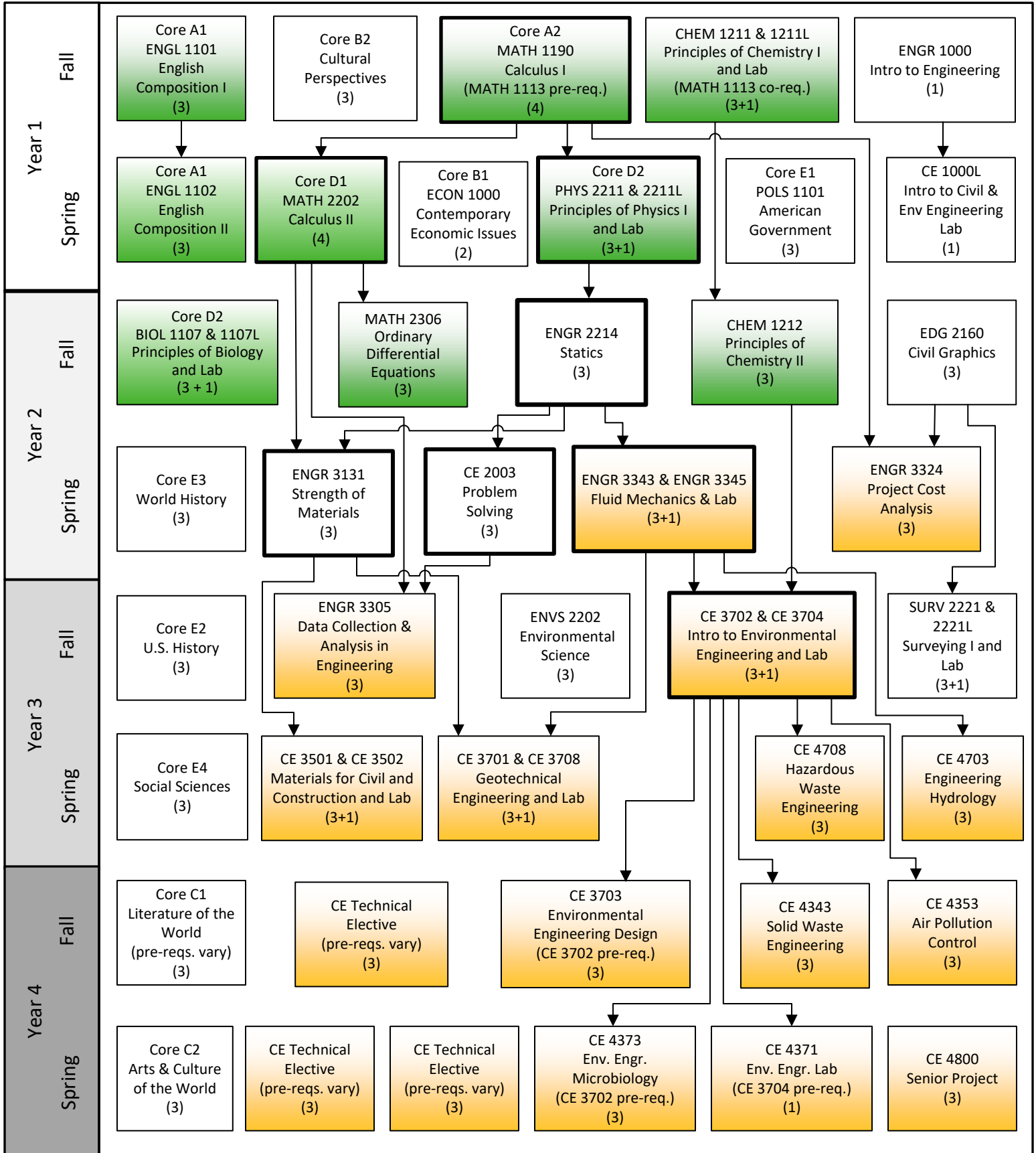




B.S. Environmental Engineering 2023-2024 Flowchart

KENNESAW STATE UNIVERSITY

Disclaimer: Although we have made every effort for this flowchart to be free of errors, it cannot be guaranteed correct for all students. See DegreeWorks for official degree requirements.



→ Pre-requisite
 - - - - - Can be taken concurrently

Critical Path
 (Take these courses as soon as you can.)

Needed to apply for Engineering Standing

Requires Engineering Standing