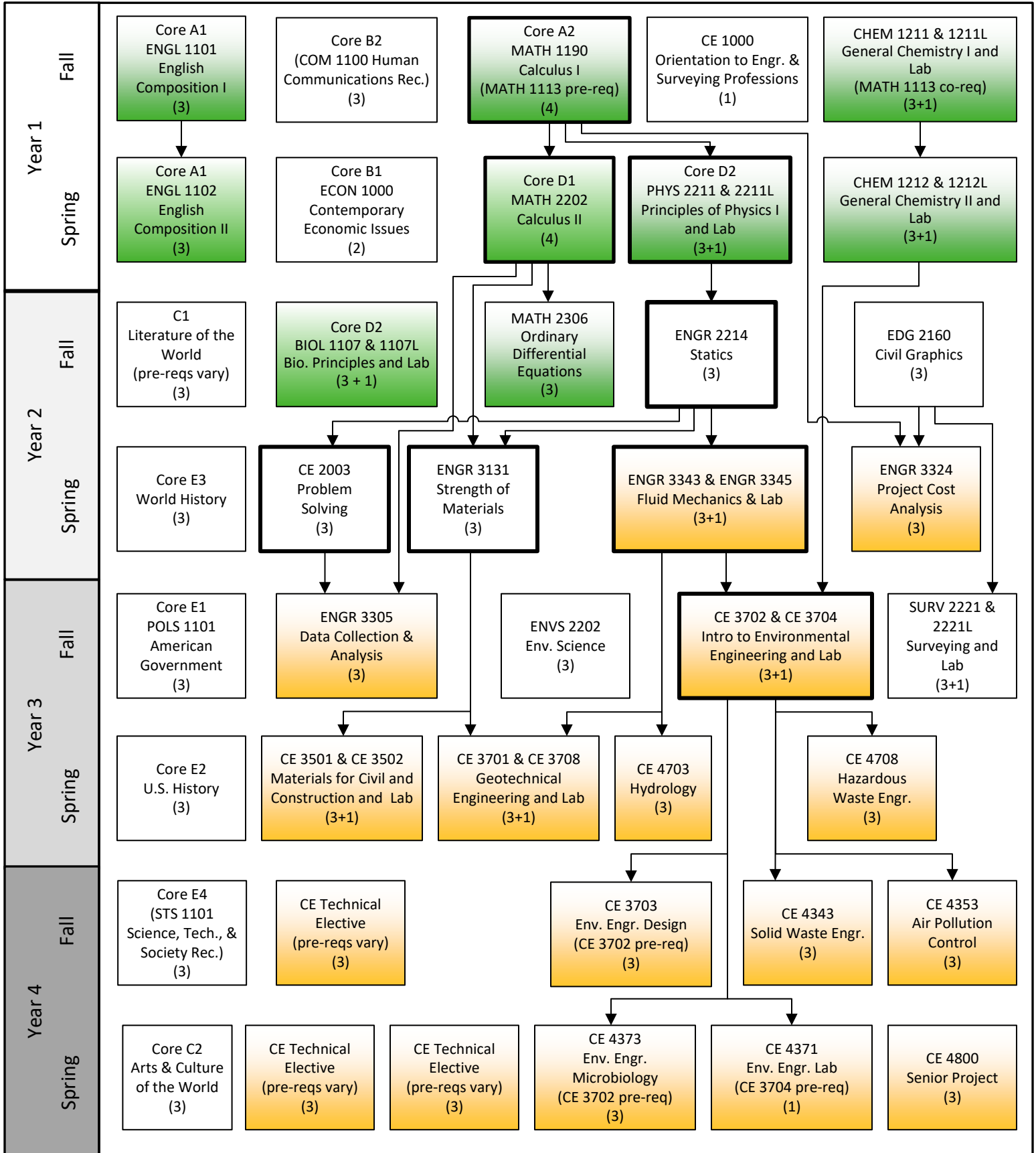




# B.S. Environmental Engineering 2021-2022 Flowchart

KENNESAW STATE UNIVERSITY

Disclaimer: Although we have made every effort for this flow chart to be free of errors, it cannot be guaranteed correct for all students. See DegreeWorks for official degree requirements.



→ Pre-requisite  
 - - - - - Can be taken concurrently

**Critical Path**  
 (Take these courses as soon as you can.)

**Needed to apply for Engineering Standing**

**Requires Engineering Standing**