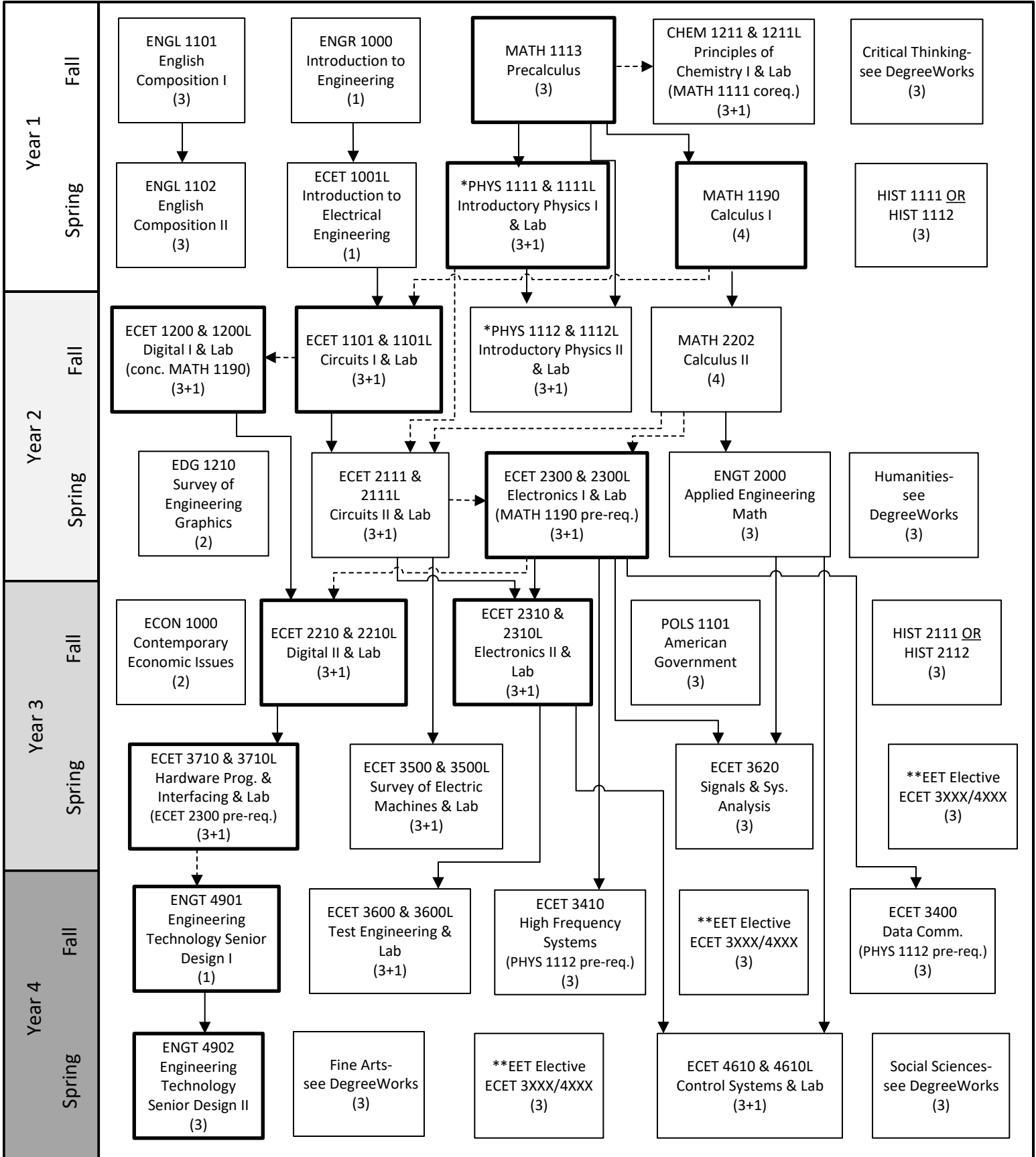




# B.S. Electrical Engineering Technology 2024-2025 Flowchart

Disclaimer: Although we have made every effort for this flowchart to be free of errors, it cannot be guaranteed correct for all students. See DegreeWorks for official degree requirements.



—————> Pre-requisite  
 - - - - -> Can be taken concurrently

**Critical Path**  
(Take these courses as soon as you can.)

\*Note: PHYS 2211/2211L & PHYS 2212/2212L also satisfy the requirements.  
 \*\*Any Appropriate 3 or 4 credit hour EET Elective course is acceptable.  
 (Check your DegreeWorks for a list of approved courses and speak with your assigned academic advisor)