



Sustainable Communities



**KENNESAW STATE
UNIVERSITY**
OFFICE OF RESEARCH

Overview: Mission Statement

Research in the sustainable communities thrust aims to investigate the complexities of social, economic, and environmental interactions at the interface between human and natural landscapes, striving to develop technologies, models and policies that foster community engagement, resource efficiency, and long-term ecological balance.

Overview: Who we are

Mario Bretfeld

Assistant Professor of Biology
CSM
mbretfel@kennesaw.edu

Erin Adams

Associate Professor of Elementary
Social Studies Education
BCOE
eadams55@Kennesaw.edu



MARIO



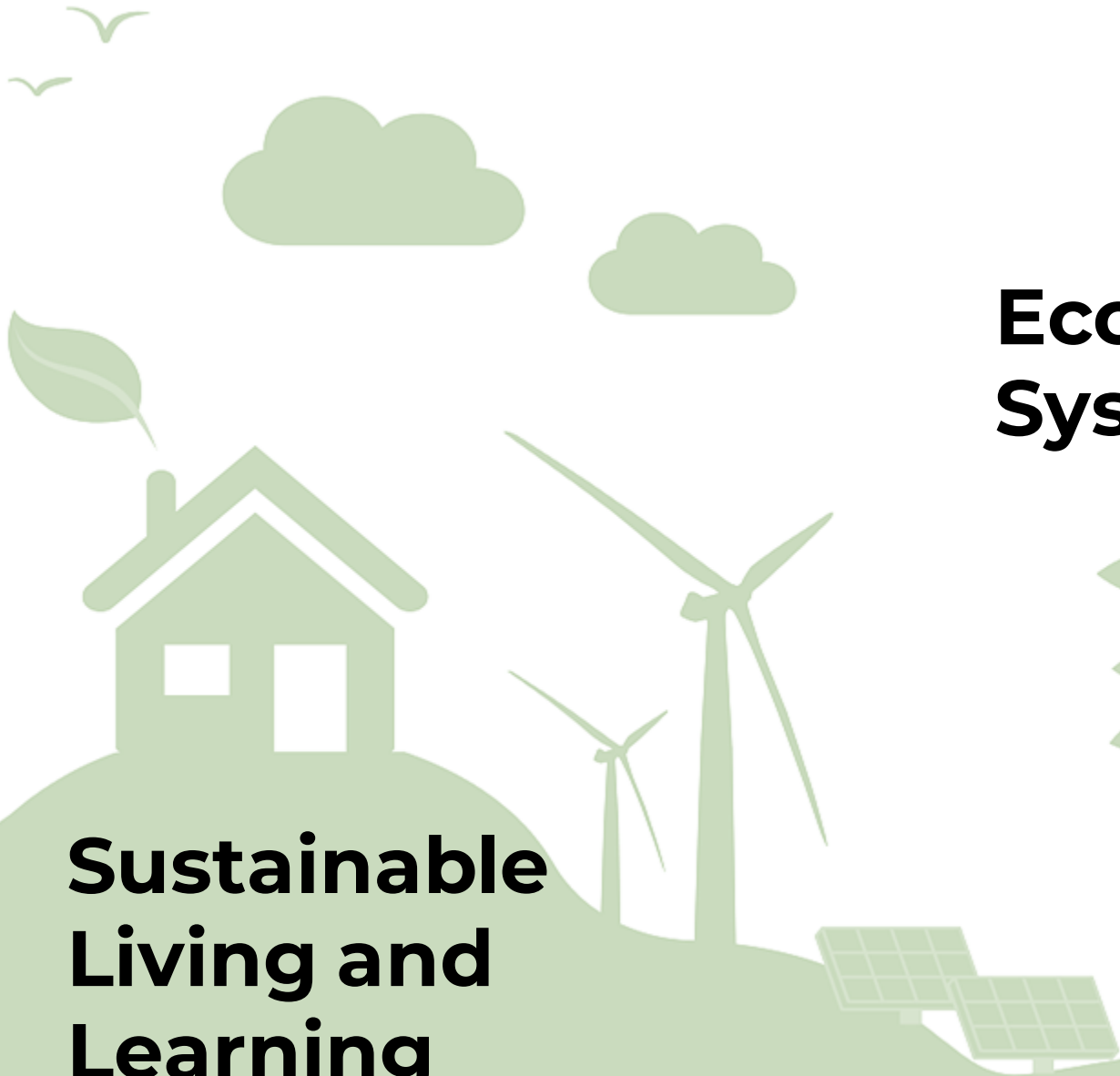
ERIN

Overview: Focal Areas

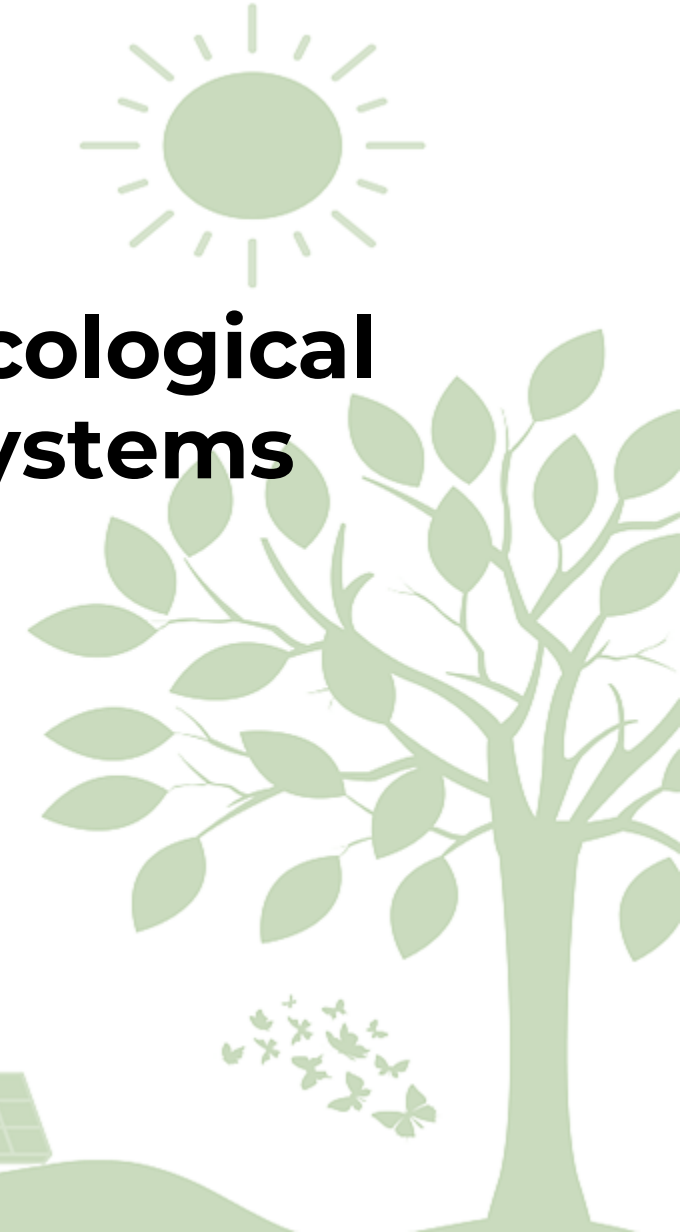
**Urban
Agriculture**



**Sustainable
Living and
Learning**



**Ecological
Systems**



Resources: **KSU Field Station**



25-acre property located along a tree-lined road parallel to interstate 75 approx. two miles from the Kennesaw campus

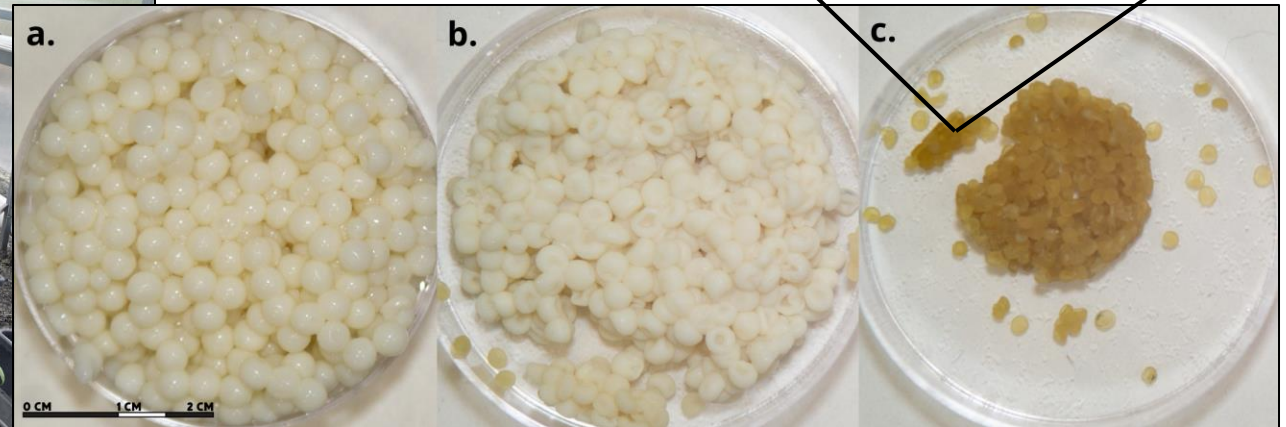
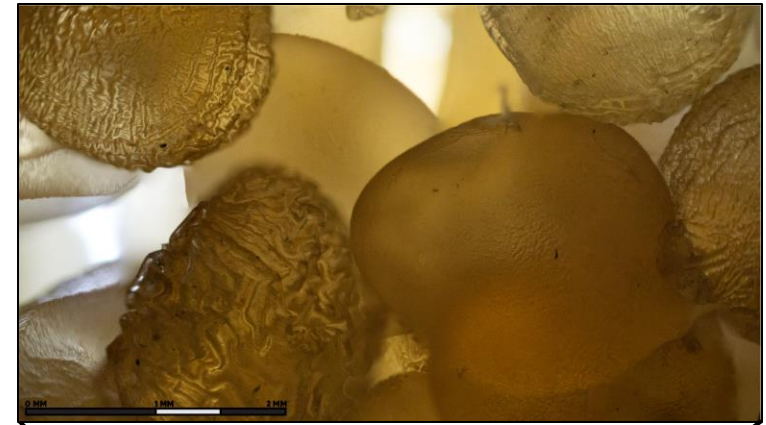


serves as a dynamic living laboratory, currently hosting a range of innovative research projects



registered with the Organization of Biological Field Stations

Impact: **KSU Field Station**



**Chitosan
Biostimulants**

Impact: KSU Field Station



\$250,000 Award Winner in
2023 Grow-NY Competition



Overview: Sustainability

“Campuses, as living, learning laboratories, will bring about transformative change for the future generations of the State of Georgia.”

USG BoR Policy Manual (9.11.1)

Top 10 states for LEED in 2022

Rank	State	Per capita square footage	Project count	Total gross area (sq ft)
1	MA	3.76	96	26,442,008
2	IL	3.48	91	44,577,321
3	NY	3.17	142	64,042,120
4	CA	2.44	386	96,457,139
5	MD	2.39	80	14,769,661
6	GA	2.25	66	24,068,422
7	CO	2.17	59	12,532,909
8	VA	1.89	95	16,289,394
9	TX	1.67	174	48,717,532
10	OR	1.43	36	6,066,035
	DC*	46.06	115	31,759,516

Source: U.S. Green Building Council

Impact: KSU Community Projects

Equinox Week

Education for Sustainability and
Human Rights Teacher Program

KSU Food Forest



Impact: Local, State, Global

Cobb County

Novelis

Drawdown GA



Recycling Drives Sustainability

As the world's largest recycler of aluminum and producer of flat-rolled aluminum product, we leverage aluminum's unique properties to deliver sustainable solutions to our customers by maintaining a high level of recycled-metal inputs across our product portfolio – a competitive differentiator and a key component of our sustainability strategy.

Our manufacturing model not only reduces the energy, water, landfill waste and greenhouse gas emissions associated with our operations, it also lowers the carbon footprint of products made using our aluminum.



Resources: **YOU!**



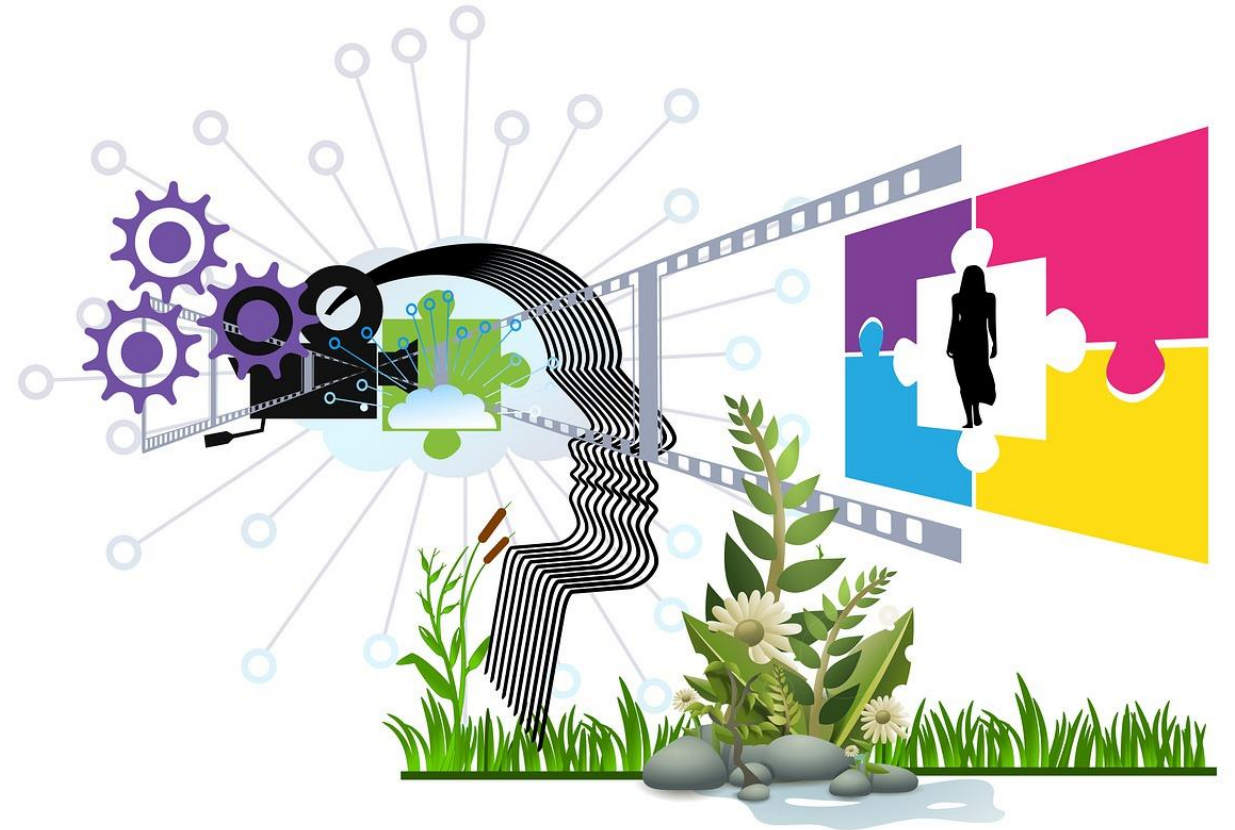
We aim to build teams of interdisciplinary researchers investigating sustainability-related issues



Teams will work together for a common goal (e.g. pursuing funding, conducting research, composing a manuscript)

Future: Next Steps

1. Facilitate and Foster Communication and Collaborative Research
2. Strengthen Integration between KSU and local Partners



Future: **Vision**

Position KSU as a leader in the development and implementation of innovative technologies, while guiding land managers and shaping policy directives to forge a path to sustainability.

Facilitate regular convenings for sustainability research consisting of monthly seminars, renowned guest speakers, share-out resources, moral support and camaraderie



Why Join?

- Break out of silos!
- Get connected to others with complementary expertise.
- Support for research and funding (e.g., Interdisciplinary Initiatives Seed Grants Program, convenings).
- Stay informed about opportunities and events.



What's Next?

Networking in breakout rooms

Fill out membership interest form

Form a Research Team!

Mario Bretfeld,
mbretfel@kennesaw.edu

Erin Adams
eadams55@Kennesaw.edu

