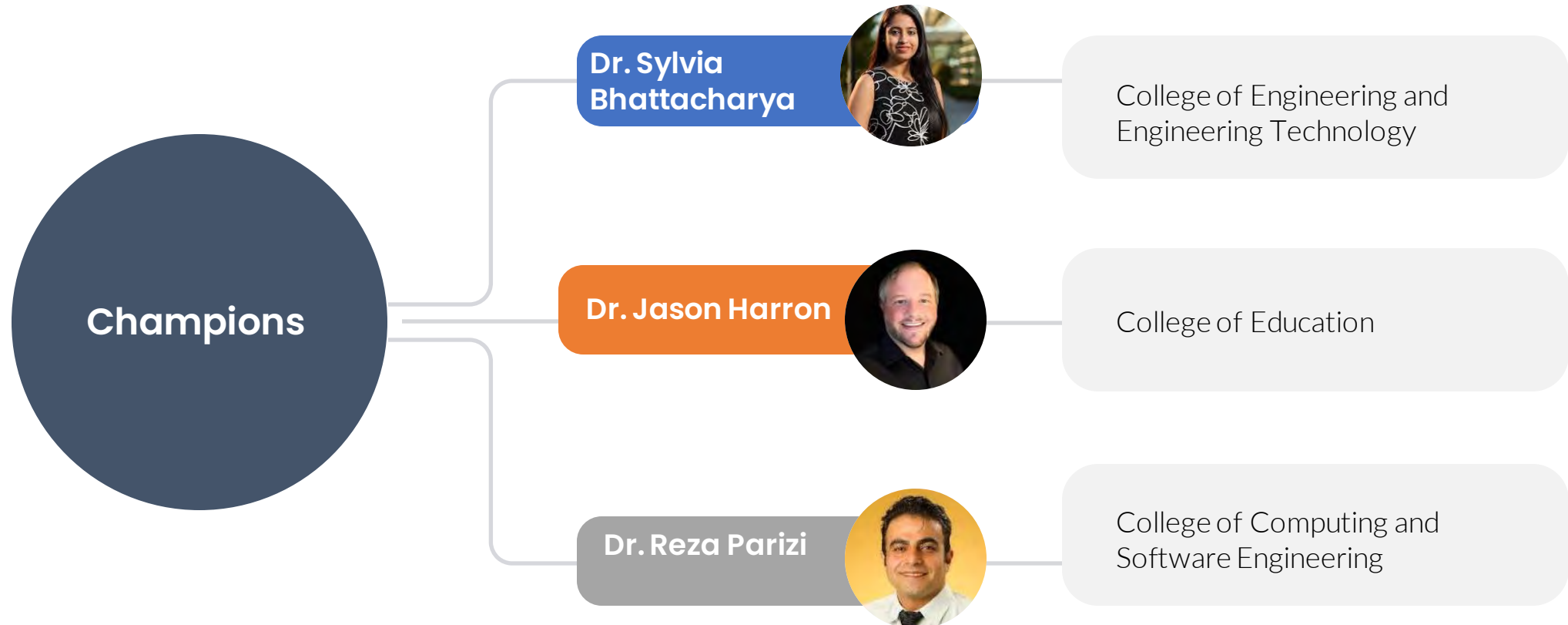
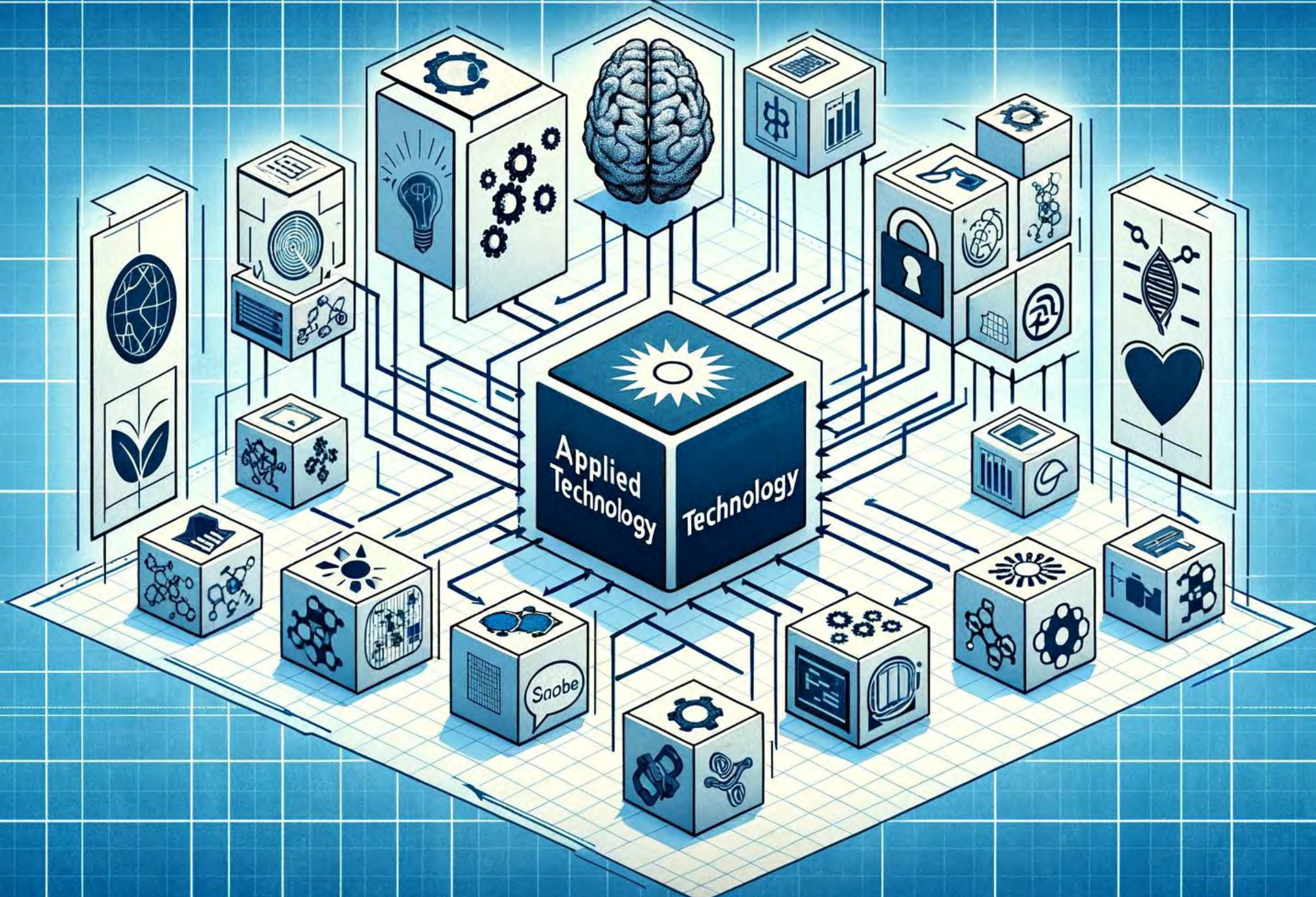


Applied Technologies





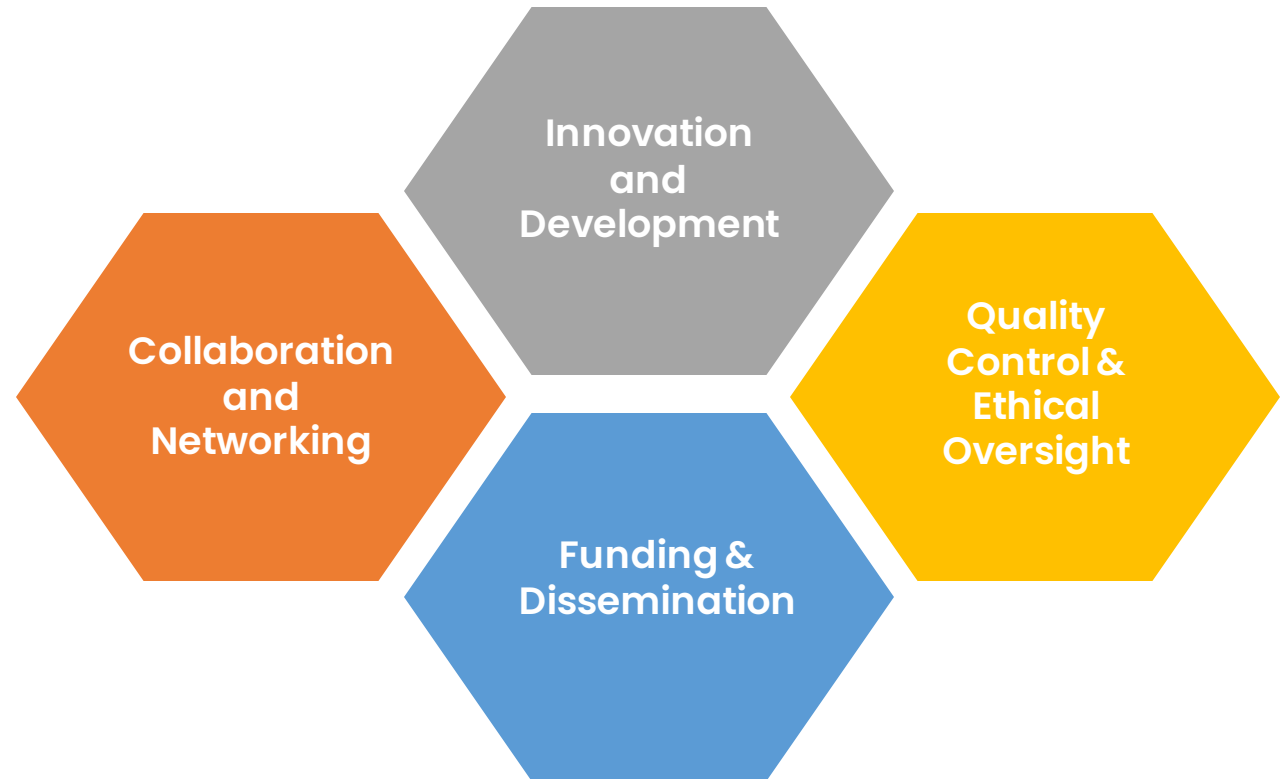


What is the Applied Technology Research Cluster?

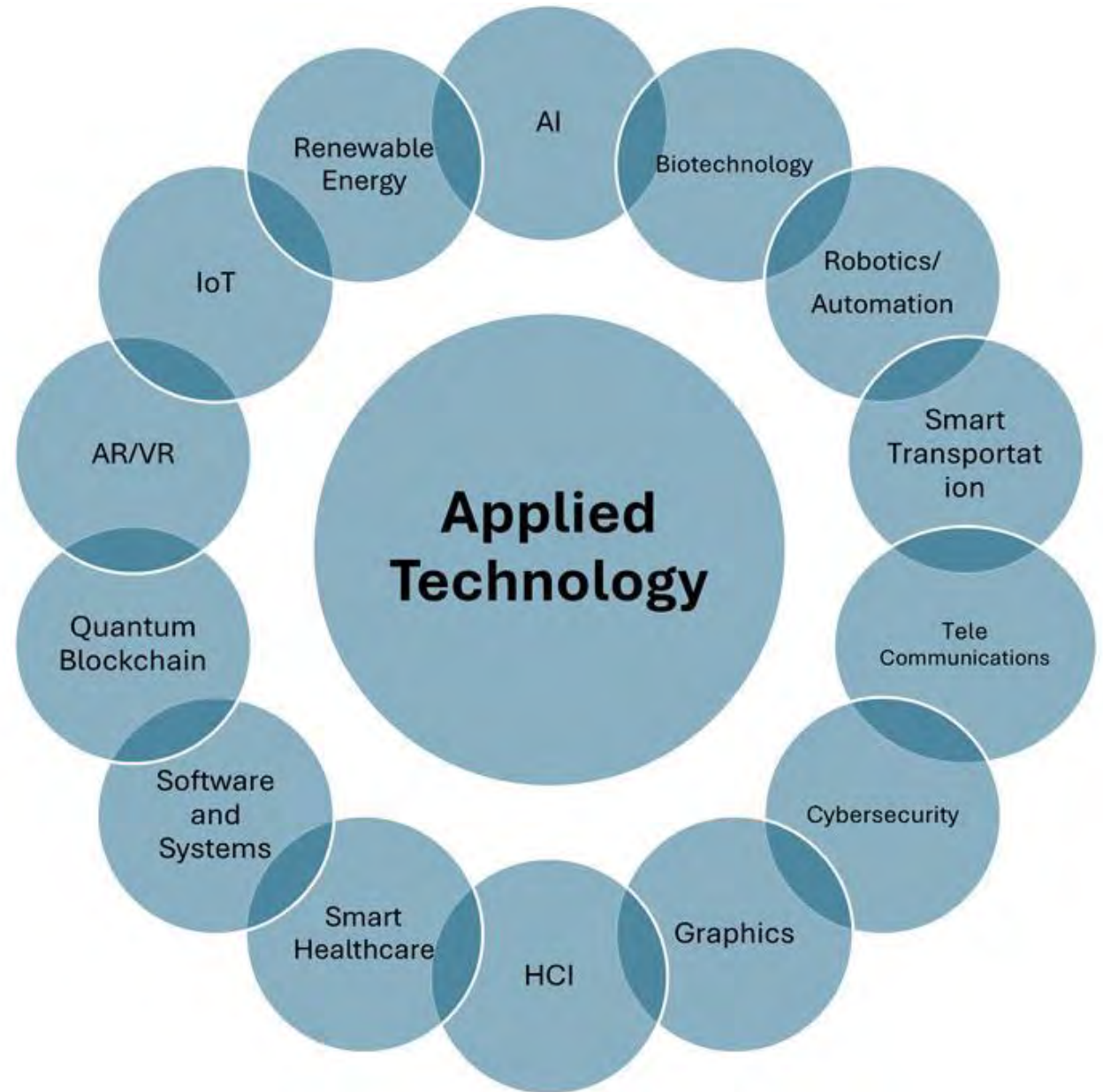
Vision Statement



“Our vision is to create a vibrant, interdisciplinary research hub in every field of applied technology, by uniting faculty, stakeholders, and partners to drive innovative and impactful research.”



Potential Research Areas



Why join the Applied Technology Research Cluster?

- Tackle the Wicked Problems - Foster a community of researchers to support interdisciplinary collaborations to address problems and issues that cannot be solved by a single specialization.
- Receive coaching and mentorship
- Target multi-million grant opportunities
- Build relationship with local companies and universities to boost entrepreneurship and innovation.

How can you be part of the Applied Technology Research cluster?

<https://bit.ly/atksu>



Upcoming Opportunities

Community Research Grant (AI Theme)- deadline April 30th.

https://pingeorgia.org/pillars/community-research/research_grants_overview/



Roadmap

(next steps)

Resource Sharing and Collaboration

1. Creation of an Online Portal: Develop an online platform where members can share information about their research, resources available, and seek collaboration opportunities.

2. Resource Sharing Agreements: Establish agreements for sharing lab space, equipment, and other resources among members. This could include a booking system for shared resources.

3. Interdisciplinary Research Groups: Encourage the formation of research groups focused on specific applied technology areas. These groups can span multiple disciplines and colleges.

Funding and Innovation

1. Grant Writing Workshops: Offer workshops on grant writing to help faculty members secure external funding.

2. Collaborative Grant Applications: Encourage and support joint grant applications for interdisciplinary projects.

3. Innovation Challenges and Hackathons: Organize events that challenge members to develop innovative solutions in applied technology, fostering a culture of creativity and problem-solving.

Community Building and Networking

1. Membership Drive: Launch a campaign to encourage faculty members to join the research hub. Highlight the benefits, such as access to resources, collaboration opportunities, and funding support.

2. Stakeholder Engagement: Involve key stakeholders from the university, including representatives from different colleges, university administration, and potential industry partners. This will ensure buy-in and support.

3. Initial Meet-and-Greet Event: Organize an inaugural event where members can introduce their expertise and research interests. This helps in identifying potential areas of overlap and collaboration.

4. Regular Networking Meetings: Establish a schedule for regular meetings, workshops, and seminars. These should be designed to foster communication and collaboration among members.

Sustainability and Growth

1. Performance Tracking: Implement a system to track the progress of collaborations, publications, and grant acquisitions.

2. Regular Reviews and Feedback: Conduct periodic assessments to gather feedback from members and adjust the hub's operations.

3. External Partnerships: Explore partnerships with industry, government, and other academic institutions to enhance research opportunities and apply research findings in practical settings.

4. Visibility and Outreach: Promote the hub's activities and successes through university channels and at conferences, enhancing its reputation and attracting new members and partnerships.



Any
Questions?