



**SOUTHERN  
POLYTECHNIC**  
STATE UNIVERSITY

**FACT BOOK**  
**2007-08**

Southern Polytechnic  
State University

Office of Institutional Research

Date: July 15, 2008



## Foreword

The Office of Institutional Research, Planning, and Assessment is proud to present the ninth publication of the **Southern Polytechnic State University Fact Book**.

The Fact Book is designed to provide current and historical data about Southern Polytechnic State University to aid decision-making.

As you review and use this publication, please make a note of items that you feel should be added or deleted. Continued improvement is the goal, and current and future publications of the Fact Book will reflect suggestions for change.

Please send suggestions to [dcline@spsu.edu](mailto:dcline@spsu.edu).

Thank you.

Dave Cline  
Director of Institutional Research



# SOUTHERN POLYTECHNIC STATE UNIVERSITY

## General Information

Introduction .....	A-1
Historical Highlights .....	A-3
Accreditations .....	A-4
Degrees and Majors Authorized .....	A-5
Student Organizations .....	A-6
Organizational Chart .....	A-7

## New Student Information

Total New Freshman Yield .....	B-1
Total New Undergraduate Transfer Yield .....	B-1
Total New Graduate Yield .....	B-1
New Freshmen by High School Attended Fall 2007 .....	B-2
New Freshmen Top Feeder Schools .....	B-3
Average SAT Scores for First Time Freshmen .....	B-4
USG Average Combined SAT Scores FTF .....	B-4
USG Mean High School GPA Entering FTF .....	B-5
New Freshmen by Major .....	B-6
New Freshmen by School .....	B-6
New Transfers by Major .....	B-7
New Transfers by School .....	B-7
New Graduate Students by Major .....	B-8
New Graduate Students by School .....	B-8

# Table of Contents





# SOUTHERN POLYTECHNIC STATE UNIVERSITY

## Student Information

Unduplicated Headcount by Student Level .....	C-1
Headcount Enrollment by Level of Classification .....	C-1
Headcount and FTE Enrollment .....	C-1
USG Headcount Enrollment .....	C-2
Total Headcount by School and Gender .....	C-3
Enrollment by Major and Gender .....	C-4
SPSU Students by Georgia County Fall 2007 .....	C-7
Non-US Countries Contributing Students Fall 2007 .....	C-8
Non-US Countries Represented by Gender Fall 2007 .....	C-9
Non-US Countries Represented by Enrollment Status Fa 07 ....	C-9
Non-US Countries Represented by Academic Level Fa 07 .....	C-9
Headcount Enrollment by Race/Ethnicity .....	C-10
Distribution of Undergraduate Students by Age .....	C-10
Distribution of Graduate Students by Age .....	C-10
Headcount Enrollment by Gender .....	C-11
Undergraduate Headcount Enrollment by Status .....	C-11
Graduate Headcount Enrollment by Status .....	C-11
Total Enrollment by Student Type .....	C-12
New Students by Classification .....	C-12
Top Feeder Inst. of Transfer Students Su 07, Fa 07, Spr 08 .....	C-13
Grade Distribution by Term .....	C-14
Average GPA by Term .....	C-15
Continuing Education Enrollment .....	C-15

# Table of Contents





# SOUTHERN POLYTECHNIC STATE UNIVERSITY

## Graduation/Retention Information

Total Degrees Awarded .....	D-1
Degrees Awarded	
by Level .....	D-1
by School and Gender .....	D-1
by Race/Ethnicity - Men .....	D-2
by Race/Ethnicity - Women .....	D-2
by School, Level and Gender .....	D-3
by School, Level, Major and Gender .....	D-5
Reported Average Starting Salaries of Graduates .....	D-7
One Year Retention Rate FTFT Freshmen .....	D-8
Retention and Graduation Rates FTFT Freshmen .....	D-9
Bachelor's Degree 6 Year Graduation Rates .....	D-13
Graduation Rates Fall 2001 Cohort .....	D-14

# Table of Contents







# SOUTHERN POLYTECHNIC STATE UNIVERSITY

## Faculty/Staff Information

Full-time Faculty by Rank .....	E-1
Average Full Time Faculty Salaries by Rank and Gender .....	E-2
Percentage of Full Time Faculty with Tenure .....	E-3
Percentage of Full Time Faculty by Gender .....	E-3
Percentage of Employees by Assigned Position .....	E-3
USG Full Time Faculty by Gender and Race 2007 .....	E-4

## Financial Information

Revenues and Expenditures .....	F-1
Total Operating Revenues .....	F-2
Total Non-Operating Revenues .....	F-3
Total Operating Expenses .....	F-4
Operating Expenses by Natural Classification .....	F-5
Operating Expenses by Natural Classification (Pie Charts) .....	F-6
Terms of Annual Giving .....	F-7
Contributions to Annual Fund .....	F-7
Annual Fund Total .....	F-7
Market Value of Endowment .....	F-7
Financial Aid Awards .....	F-8
USG Freshmen with HOPE Scholarships .....	F-9
USG Undergraduates with HOPE Scholarships .....	F-10

# Table of Contents





# SOUTHERN POLYTECHNIC STATE UNIVERSITY

## Facilities Information

Building and Content Values .....	G-1
Lawrence V. Johnson Library .....	G-3
Class Level by Class Size	
Fall 2006 .....	G-4
Spring 2007 .....	G-4
Summer 2007 .....	G-4
Fall 2007 .....	G-5
Spring 2008 .....	G-5
Student Enrolled Hours by Time .....	G-6
Campus Map .....	G-7

# Table of Contents





# SOUTHERN POLYTECHNIC STATE UNIVERSITY

## General Information

Introduction .....	A-1
Historical Highlights .....	A-3
Accreditations .....	A-4
Degrees and Majors Authorized .....	A-5
Student Organizations .....	A-6
Organizational Chart .....	A-7

**General Information**



## Introduction

Southern Polytechnic State University, a member of the University System of Georgia, is a comprehensive university with a unique purpose. Through a fusion of technology with the liberal arts and sciences, SPSU creates a learning community that encourages thoughtful inquiry, diverse perspectives, and strong preparation of its graduates to be leaders in an increasingly technological world.

Southern Polytechnic is located in the historic, vibrant city of Marietta, Georgia, northwest of downtown Atlanta. Approximately 4,500 traditional and non-traditional students attend day, evening, and weekend classes on a campus of naturally wooded landscape with modern facilities and on-campus apartment housing to meet students' academic, physical and social needs.

The institution was founded in 1948 at the request of Georgia business and industry as a two-year division of The Georgia Institute of Technology, originally called The Technical Institute and soon thereafter the Southern Technical Institute. It became an independent college in the University System of Georgia in 1980 and the school's first president, Dr. Stephen Cheshier was named. The college became a university in 1996 with the new name of Southern Polytechnic State University. Its second president, Dr. Lisa A. Rossbacher, joined SPSU in the summer of 1998.

## Academic Programs

The University offers bachelor's and master's degrees and continuing professional development in science, engineering, technology, business, architecture, and related fields, with a focus on how to apply knowledge and use technology to solve real problems. Dedicated and experienced faculty with excellent academic credentials and business and industry experience teach in the University's academic areas: The School of Arts and Sciences; the School of Engineering Technology and Management; The School of Architecture, Civil Engineering Technology, and Construction; the School of Computing and Software Engineering; and the Division of Engineering.

Southern Polytechnic has earned an exceptional reputation in the field of engineering technology education. The 2007 edition of *Profiles of Engineering and Engineering Technology Colleges*, published by the American Society for Engineering Education, ranked SPSU as #1 in the U. S. in the number of bachelor's and master's degrees in engineering technology awarded to African American students, #2 in the number of students enrolled in engineering technology programs, and #5 in the number of engineering technology degrees awarded to women.

SPSU is a university of diverse and talented students. Entering freshmen rank in the top four highest SAT scores in the University System of Georgia. SPSU is ranked #5 in the country by the Institute of International Education for the number of international students attending specialized colleges and universities.

Over the years, Southern Polytechnic has expanded and broadened its degree programs in some of the nation's fastest growing fields, such as software engineering and information technology, and it offers a variety of arts and sciences degrees in fields that include mathematics, physics, biology, english and professional communication, and international studies. In late 2006 and early 2007, the University added three new undergraduate engineering degree programs: Construction Engineering, Mechatronics Engineering, and Systems Engineering. The University also offers a nationally accredited Bachelor of Architecture, which has been listed in the *America's Best Architecture and Design Schools* as one of the top ten schools in the south.

Southern Polytechnic is also leading the way in Georgia with its non-degree certificate programs in technology-related areas. Non-degree certificate programs are offered through the Office of Extended University and include certification in embedded systems, computer service technician, web developer, programming, time study, and A+ Test Prep. The Computer Science Department offers a graduate certificate in software engineering that gives practitioners the opportunity to advance into leadership positions and provides courses that can apply toward the Master of Science in Software Engineering. Computer Science also offers an undergraduate certificate in programming. This certificate program offers courses that can apply towards the Bachelor of Science in Computer Science.

## A University of Firsts

Southern Polytechnic is an educational institution of "firsts." In the fall of 1997, Southern Polytechnic stepped to the forefront of technological advances in education, becoming the first institution in Georgia to offer a full degree program over the Internet. The Master of Science in Quality Assurance, offered on the internet by the Industrial Engineering Technology Department, set the tone for educational options in the future and placed Southern Polytechnic as a role model for the University System of Georgia. Since that time, Southern Polytechnic has expanded its internet options, adding complete certificate programs as well as the electronic core curriculum (eCore) online, and an undergraduate WebBSIT, a bachelor's degree offered in a consortium with five other University System schools.

Other University "firsts" include:

- The University System of Georgia's **only** nationally accredited professional Bachelor of Architecture degree
- Georgia's **first** master's program in technical and professional communication
- Georgia's **first** master's program in the management of technology (now an MBA degree)
- The Southeast's **only** master's programs in electrical engineering technology and quality assurance
- Georgia's **only** master's program in construction
- Georgia and the Southeast's **first** Bachelor of Science in Telecommunication Engineering Technology
- Georgia's **only** bachelor's degree program in software engineering and Georgia's only master's degree program in software engineering at a public institution
- Georgia's **only** bachelor's degree in surveying and mapping
- Georgia's **first** undergraduate degree in Construction Engineering, which is one of only nine in the country.
- Georgia's **first** Mechatronics Engineering Degree
- The **first** institution in the University System of Georgia to build privatized on-campus housing. These apartments served as a pilot program for the System.

## Student Life

Southern Polytechnic provides many opportunities for growth beyond the classroom. The University's professional student organizations compete and win top honors in highly competitive regional, national, and international competitions. Choices for student involvement are diverse, including the Student Information Security Team, the Autonomous Underwater Vehicle Team, the Super Mileage Vehicle Team, the Aerial Robotics Team, and the school's Forensic Team, among others. Recent winning teams include the Formula Race Car Team, which placed first in the Society of Automobile Engineer's (SAE) Southeast Region competition and went on to place 19<sup>th</sup> overall in the 2006 International SAE competition competing against 130 entries from 39 states and 14 countries. The Steel Bridge Team placed first in the 2006 Southeast Regional Conference and second in 2007 at the American Society of Civil Engineers Competition against teams from such universities as Tennessee, Florida, Miami, Auburn, and Vanderbilt.

Greek organizations, the student newspaper (*The Sting*), intramural programs, honor societies, student government, and other activities and organizations give students many options for participation.

Intercollegiate athletics are also an important aspect of student life. The men's basketball team, the Runnin' Hornets, has earned the opportunity of participating in the National Association of Intercollegiate Association's (NAIA) national tournament 12 times. They have been Southern States Athletic Conference (SSAC) Conference Champions nine times and Conference Tournament Champions six times. They have held 1<sup>st</sup> and 2<sup>nd</sup> place rankings in the NAIA Division I.

In the fall of 2002, Southern Polytechnic added its first-ever women's basketball team, the Lady Hornets.

SPSU's baseball team has played in the NAIA World Series and earned the Georgia Alabama Carolina Conference (GACC) Tournament Championship in 2004. The team also earned the Southern States Athletic Conference championship in 2007 (SSAC was previously GACC). Head baseball coach Matt Griffin was named 2007 SSAC Coach of the Year. Twelve SPSU baseball players have been drafted into professional baseball.

SPSU Athletic Director Karl Staber was named SSAC Athletic Director of the Year in 2007.

Southern Polytechnic formed its first intercollegiate men's soccer program. The team began competition in August of 2007.





### Historical Highlights

Founded in 1948 as a two-year division of Georgia Institute of Technology, the school was established at the request of Georgia business and industry. It first opened its doors as The Technical Institute in rented military barracks in Chamblee, Georgia.

The first director, L.V. Johnson, began operations with 116 students, all but 10 of whom were World War II veterans and all but one of whom were male, and a staff of 12 members.

In 1949, a name change and a status change became important to the institution and its students. Now called the Southern Technical Institute, the institution was recognized as a college-level school by the U.S. Department of Education.

Less than a decade later, the growing college moved to its current campus in Marietta, Georgia. In 1961, Hoyt McClure was named acting director and led the move of the college to eight new buildings on 120 acres of land. This was the base of today's campus of 198 acres.

In 1970, SPSU became a four-year college and one of the first colleges in the nation to offer the bachelor of engineering technology degree.

In 1979, the Board of Regents of the University System of Georgia approved making "Southern Tech" an independent senior college in the University System of Georgia, severing organizational ties with its former parent institution, Georgia Tech. In the summer of 1980, the school officially became the 14th senior college and the 33rd independent unit of the University System.

The college's first president, Dr. Stephen R. Cheshier from Purdue University, was named in 1980 and took the college through the transition of becoming Southern College of Technology in 1987. He served with distinction until his retirement as president in June 1997.

The school became a university and was re-named Southern Polytechnic State University in the summer of 1996.

Dr. Daniel S. Papp was SPSU's interim president from July of 1997 until the summer of 1998.

The University welcomed Dr. Lisa A. Rossbacher as president in August, 1998.

## Accreditations

	Accrediting Organization	URL	First Year Accredited	Last Year Accredited	Next Year of Review
<b>Southern Polytechnic State University</b>	Southern Association of Colleges and Schools	<a href="http://www.sacs.org/">http://www.sacs.org/</a>	1964	1998	2009
<b>Degree</b>					
<b>Architecture BARCH</b>	National Architectural Accrediting Board, Inc.	<a href="http://www.naab.org/">http://www.naab.org/</a>	1990	2005	2008
<b>Business Administration (formerly Management) B.S.</b>	Association of Collegiate Business Schools and Programs	<a href="http://www.acbsp.org/">http://www.acbsp.org/</a>	2003	2003	2013
<b>Civil Engineering Technology B.S.</b>	ABET, Inc.	<a href="http://www.abet.org/">http://www.abet.org/</a>	1973	2002	2008
<b>Computer Engineering Technology B.S.</b>	ABET, Inc.	<a href="http://www.abet.org/">http://www.abet.org/</a>	1991	2002	2008
<b>Computer Science B.S.</b>	ABET, Inc.	<a href="http://www.abet.org/">http://www.abet.org/</a>	2006	2006	2011
<b>Construction Management B.S.</b>	American Council for Construction Education	<a href="http://www.acce-hq.org/">http://www.acce-hq.org/</a>	1992	2002	2008
<b>Electrical Engineering Technology B.S.</b>	ABET, Inc.	<a href="http://www.abet.org/">http://www.abet.org/</a>	1973	2002	2008
<b>Industrial Engineering Technology B.S.</b>	ABET, Inc.	<a href="http://www.abet.org/">http://www.abet.org/</a>	1973	2002	2008
<b>Mechanical Engineering Technology B.S.</b>	ABET, Inc.	<a href="http://www.abet.org/">http://www.abet.org/</a>	1973	2002	2008
<b>Surveying and Mapping B.S.</b>	ABET, Inc.	<a href="http://www.abet.org/">http://www.abet.org/</a>	2006	2006	2011
<b>Telecommunications Engineering Technology B.S.</b>	ABET, Inc.	<a href="http://www.abet.org/">http://www.abet.org/</a>	2003	2003	2008

Source: ACC,CS/SWE, and ET/MGT Schools

## Degrees and Majors Authorized by The Board of Regents

### Master's

#### Master of Business Administration

#### Master of Science (with a Major in):

Computer Science  
Construction Management  
Engineering Technology/Electrical  
Information Design & Communication  
Quality Assurance

#### Master of Science in Information Technology

#### Master of Science in Systems Engineering

#### Master of Science in Software Engineering

### Bachelor's

#### Bachelor of Arts (with a Major in):

Business Administration  
Computer Science  
English and Professional Communication  
Mathematics  
Physics

#### Bachelor of Architecture

#### Bachelor of Applied Science

#### Bachelor of Apparel and Textiles

#### Bachelor of Science (with a Major in):

Architectural Engineering Technology  
Biology  
Business Administration  
Chemistry  
Civil Engineering Technology  
Computer Engineering Technology  
Computer Science  
Construction Management  
Electrical Engineering Technology  
Industrial Distribution  
Industrial Engineering Technology  
International Studies  
Mathematics  
Mechanical Engineering Technology  
Mechatronics Engineering  
Physics  
Surveying and Mapping  
Technical Communication

#### Bachelor of Science in Construction Engineering

#### Bachelor of Science in Information Technology

#### Bachelor of Science in Psychology

#### Bachelor of Science in Software Engineering

#### Bachelor of Science in Systems Engineering

#### Bachelor of Science in Telecommunications Engineering Technology

### Associate's

#### Associate of Science, Core Curriculum

### Advanced Certificate

#### Advanced Certificate in Systems Engineering

#### Post-Baccalaureate Certificate (with a Major in):

Business Administration  
Communications Management  
Content Development  
Instructional Design  
Visual Communication and Graphics

#### Transition Certificate in:

Computer Science  
Information Technology

#### Certificate in:

Information Technology  
Quality Assurance  
Software Engineering  
Systems Engineering  
Technical & Professional Communication

### Certificate of Less than One Year

Apparel Product Development  
Business Continuity  
Engineering Sales  
Information Security and Assurance  
Land Development  
Land Surveying  
Logistics  
Production Design  
Professional Spanish  
Programming  
Project Management  
Quality Principles  
Specialty Construction

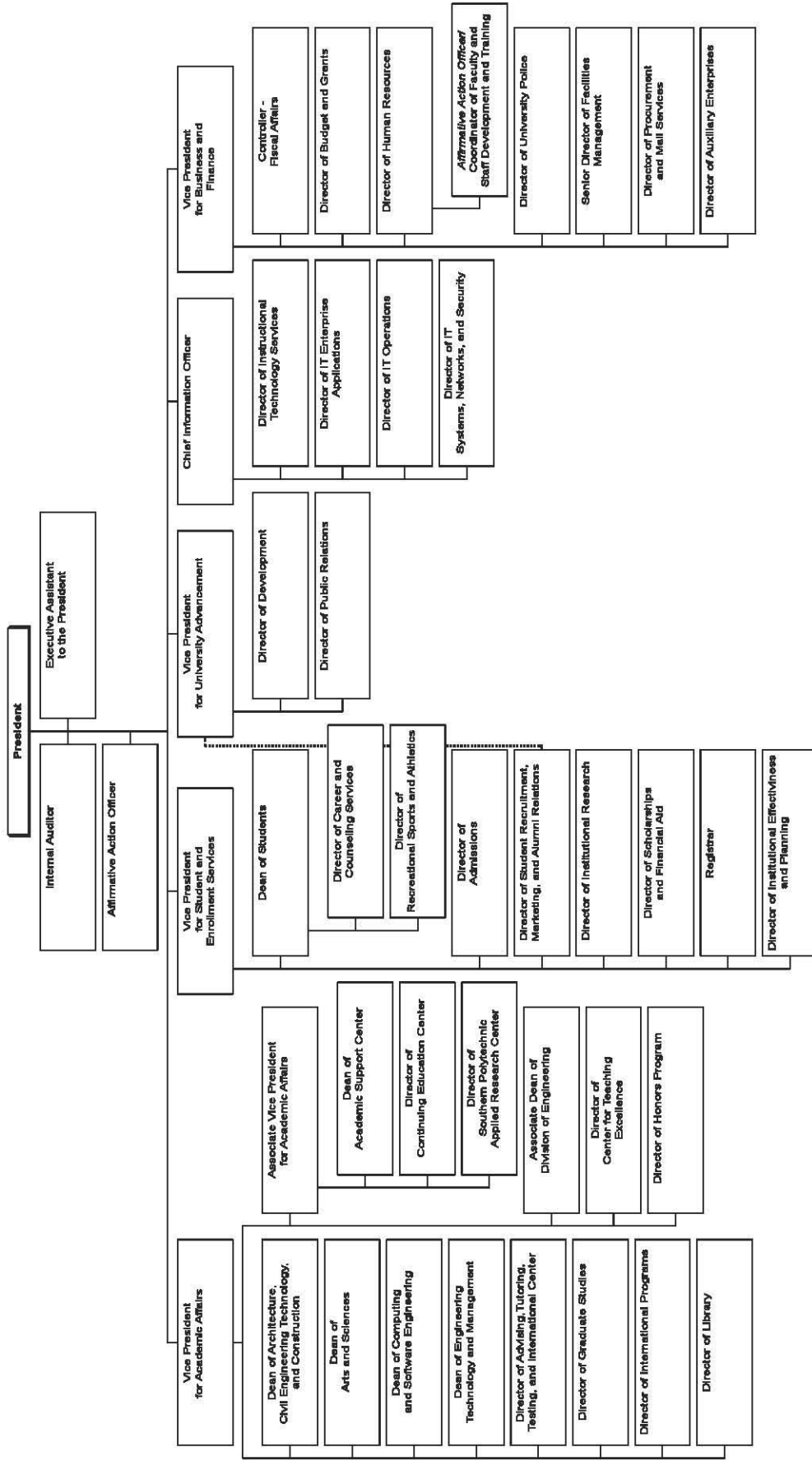
Source: USG Degrees and Majors Authorized

## Student Organizations 2007-08

Aerial Robotics Team (ART)  
 Air Force ROTC  
 Alpha Chi National College Honor Society  
 Alpha Phi Alpha  
 Alpha Xi Delta  
 Amateur Radio Club (ARC)  
 American Association of Textile Chemists and Colorists (AATCC)  
 American Concrete Institute (ACI)  
 American Institute of Architecture Students (AIAS)  
 American Institute of Constructors (AIC)  
 American Institute of Industrial Engr. (AIIE)  
 American Society for Quality Control (ASQC)  
 American Society of Civil Engineers (ASCE)  
 American Society of Mechanical Engineers (ASME)  
 ASCE Concrete Canoe Team  
 ASCE Steel Bridge Team  
 Association of Computing Machinery (ACM)  
 Association of General Contractors (AGC)  
 Autonomous Underwater Vehicle Team (AUV)  
 Baptist Student Union  
 Black Action Society  
 Campus Activities Board (CAB)  
 Campus Crusade for Christ (CCC)  
 Campus Outreach and Service Team (COST)  
 Caribbean Student Association (CarbiSA)  
 Chinese Friendship Association (CFA)  
 Computer and Console Gaming Association (CCGA)  
 Delta Mu Delta  
 Forensics Team  
 Formula SAE Race Car Team  
 Gamma Phi Beta  
 General Engineering of Autonomous Robots (GEAR)  
 Georgia Society of Professional Engineers (GSPE)  
 Green Hornet Radio Station (WGHR)  
 Indian Culture Exchange (ICE)  
 Institute of Electrical and Electronics Engineers (IEEE)  
 Institute of Industrial Engineers (IIE)  
 Institute of Transportation Engineers (ITE)  
 InterGreek Council (IGC)  
 International Students Association (ISA)  
 Japanese Friendship Society  
 Kappa Alpha Psi  
 Kappa Sigma  
 La Tertulia  
 MBA Student Association (MBASA)  
 Motivating Others Spiritually Through Teaching (MOSTT)

Muslim Student Association (MSA)  
 National Association of Home Builders (NAHB)  
 National Institute of Minority Architects (NOMA)  
 National Organization of Minority Architecture Students (NOMAS)  
 National Society of Black Engineers (NSBE)  
 Odyssey of the Mind  
 Outdoor Recreation Club (ORC)  
 Pan Hellenic Council  
 Phi Alpha Delta  
 Phi Beta Sigma  
 Phi Psi  
 Pi Kappa Phi  
 Poly UNIX Club  
 Residence Hall Association  
 Sexual Acceptance for Everyone (SAFE)  
 SGA Council  
 SGA Judiciary  
 Sigma Chi Epsilon  
 Sigma Nu  
 Sigma Pi  
 Society of Automotive Engineers (SAE)  
 Society of Hispanic Engineers (SHPE)  
 Society of Manufacturing Engineers (SME)  
 Southern Polytechnic Internet Security Association (SPISA)  
 Society of Women Engineers  
 Southern Technical Institute News Gazette (STING)  
 SPSU Ambassadors  
 SPSU Bands  
 SPSU Cheerleaders  
 SPSU Cycling Club  
 SPSU Culture Series  
 SPSU Dance Team  
 Student Government Association  
 Student Honors Council  
 Student Society of Environmental Developers  
 Students In Free Enterprise (SIFE)  
 Surveying and Mapping Society of Georgia (SAMSOG)  
 Tau Alpha Pi  
 Tau Kappa Epsilon  
 Ultimate Frisbee Club  
 University Round Table (URT)  
 Women's Lacrosse  
 Wrestling Club

Southern Polytechnic State University  
 Organization Chart  
 2007/08







# SOUTHERN POLYTECHNIC STATE UNIVERSITY

## New Student Information

Total New Freshman Yield .....	B-1
Total New Undergraduate Transfer Yield .....	B-1
Total New Graduate Yield .....	B-1
New Freshmen by High School Attended Fall 2007 .....	B-2
New Freshmen Top Feeder Schools .....	B-3
Average SAT Scores for First Time Freshmen .....	B-4
USG Average Combined SAT Scores FTF .....	B-4
USG Mean High School GPA Entering FTF .....	B-5
New Freshmen by Major .....	B-6
New Freshmen by School .....	B-6
New Transfers by Major .....	B-7
New Transfers by School .....	B-7
New Graduate Students by Major .....	B-8
New Graduate Students by School .....	B-8





**Total New Freshmen Yield  
Fall 2003-2007**

	<b>Fall 2003</b>	<b>Fall 2004</b>	<b>Fall 2005</b>	<b>Fall 2006</b>	<b>Fall 2007</b>
<b>Applied*</b>	1000	1054	1079	1187	1282
<b>Accepted</b>	671	661	712	731	778
<b>Enrolled</b>	443	435	432	436	485

**Total New Undergraduate Transfer Yield  
Fall 2003-2007**

	<b>Fall 2003</b>	<b>Fall 2004</b>	<b>Fall 2005</b>	<b>Fall 2006</b>	<b>Fall 2007</b>
<b>Applied*</b>	746	763	823	893	896
<b>Accepted</b>	489	483	573	573	619
<b>Enrolled</b>	376	388	444	418	476

**Total New Graduate Yield  
Fall 2003-2007**

	<b>Fall 2003</b>	<b>Fall 2004</b>	<b>Fall 2005</b>	<b>Fall 2006</b>	<b>Fall 2007</b>
<b>Applied*</b>	334	294	290	339	336
<b>Accepted</b>	202	173	184	227	179
<b>Enrolled</b>	126	125	126	144	141

\* Count of those applications which were rejected, incomplete, and accepted.



**New Freshmen Top Feeder Schools  
Fall 2006 and Fall 2007**

<b>County</b>	<b>High School Attended</b>	<b>Fall 2006</b>	<b>Fall 2007</b>
Cobb	Kennesaw Mountain	7	15
Cherokee	Sequoyah	13	13
Cobb	Harrison	12	12
Cobb	Carlton J. Kell	6	12
Cobb	North Cobb	10	11
Gwinnett	Grayson	6	10
Cobb	Marietta	3	10
Forsyth	South Forsyth	0	10
Cherokee	Cherokee	5	9
Cobb	George Walton	9	9
Walton	Loganville	1	8
DeKalb	Chamblee	2	7
Muscogee	Northside	0	7
Cobb	Wheeler	5	7
Cobb	Campbell	4	6
Forsyth	Forsyth Central	6	6
Gilmer	Gilmer	4	6
Paulding	Hiram	2	6
Fayette	Starr's Mill	4	6
Cherokee	Woodstock	3	6
Whitfield	Dalton	1	5
Hall	Flowery Branch	0	5
Cobb	Lassiter	6	5
Murray	Murray County	3	5
Fulton	Northview	1	5
Gwinnett	Peachtree Ridge	4	5
Cobb	Robert L Osborne	4	5
DeKalb	Stone Mountain	2	5
Fayette	Whitewater	0	5

Source: SPSU Crystal Report

**Average SPSU SAT Scores For First Time Freshmen  
Fall 2003-2007**

	Fall 2003	Fall 2004	Fall 2005	Fall 2006	Fall 2007
Ave. Math Score	565	573	574	574	569
Ave Verbal Score	540	546	550	539	537
Total Ave. Score	1105	1119	1124	1113	1106

**University System of Georgia  
Average Combined SAT Scores, First Time Freshmen  
Fall 2003-2007**

Institution	Fall 03	Fall 04	Fall 05	Fall 06	Fall 07
Georgia Institute of Technology	1325	1323	1328	1329	1333
Georgia State University	1080	1088	1085	1086	1084
University of Georgia	1209	1230	1237	1222	1225
<i>Research University Average</i>	<i>1211</i>	<i>1220</i>	<i>1223</i>	<i>1221</i>	<i>1215</i>
Georgia Southern University	1056	1080	1098	1104	1108
Valdosta State University	1017	1025	1028	1026	1009
<i>Regional University Average</i>	<i>1042</i>	<i>1060</i>	<i>1071</i>	<i>1069</i>	<i>1066</i>
Albany State University	905	934	915	902	908
Armstrong Atlantic State University	1024	1027	1020	1011	1011
Augusta State University	978	975	978	970	991
Clayton College & State University	1002	992	984	997	974
Columbus State University	973	989	1003	990	992
Fort Valley State University	897	913	902	898	883
Georgia College & State University	1088	1116	1120	1124	1127
Georgia Southwestern State University	999	986	996	991	983
Kennesaw State University	1047	1069	1067	1071	1066
North Georgia College & State Univ.	1074	1080	1079	1082	1079
Savannah State University	886	902	876	882	866
Southern Polytechnic State University	<b>1105</b>	<b>1119</b>	<b>1124</b>	<b>1113</b>	<b>1106</b>
University of West Georgia	1009	1006	1021	1012	1013
<i>Comprehensive University Average</i>	<i>1010</i>	<i>1016</i>	<i>1020</i>	<i>1019</i>	<i>1018</i>

Source: USG Report SRPT301

**University System of Georgia  
Mean High School GPA, Entering First Time Freshmen  
Fall 2004-Fall 2007**

<b>Institution</b>	<b>Fall 04</b>	<b>Fall 05</b>	<b>Fall 06</b>	<b>Fall 07</b>
Georgia Institute of Technology	3.72	3.74	3.71	N/A
Georgia State University	3.31	3.30	3.32	N/A
University of Georgia	3.65	3.68	3.67	N/A
<i>Research University Average</i>	<i>3.59</i>	<i>3.60</i>	<i>3.60</i>	<i>N/A</i>
Georgia Southern University	3.08	3.12	3.14	N/A
Valdosta State University	3.05	3.42	3.06	N/A
<i>Regional University Average</i>	<i>3.07</i>	<i>3.10</i>	<i>3.10</i>	<i>N/A</i>
Albany State University	2.93	2.89	2.83	N/A
Armstrong Atlantic State University	3.07	3.06	3.06	N/A
Augusta State University	2.85	2.90	2.92	N/A
Clayton College & State University	2.91	3.00	3.06	N/A
Columbus State University	2.99	3.00	2.97	N/A
Fort Valley State University	2.84	2.82	2.76	N/A
Georgia College & State University	3.20	3.27	3.30	N/A
Georgia Southwestern State University	3.17	3.08	3.03	N/A
Kennesaw State University	3.18	3.16	3.16	N/A
North Georgia College & State University	3.30	3.30	3.32	N/A
Savannah State University	2.84	2.75	2.78	N/A
Southern Polytechnic State University	3.17	3.24	3.22	N/A
University of West Georgia	2.97	3.01	3.01	N/A
<i>Comprehensive University Average</i>	<i>3.04</i>	<i>3.05</i>	<i>3.05</i>	<i>N/A</i>

**New Freshmen by Major  
Fall 2003-2007**

	Fall 03	Fall 04	Fall 05	Fall 06	Fall 07
Apparel/Textile Engr. Tech./Fashion Design	12	1	2	4	1
Architecture	98	89	96	101	128
Biology	9	6	7	8	13
Business Administration	N/A	N/A	N/A	0	9
Civil Engineering Technology	35	30	31	33	53
Computer Engineering Technology	35	38	41	45	33
Computer Science	50	46	44	51	38
Construction Engineering	N/A	N/A	N/A	0	6
Construction Management	8	11	16	8	7
Electrical Engineering Technology	38	31	28	19	25
English and Professional Communication	N/A	N/A	N/A	0	0
General Studies/Undecided	62	47	42	42	34
Industrial Engineering Technology	7	10	9	7	11
Information Technology	9	12	4	7	10
Information Technology (Web)	N/A	0	0	0	0
International Studies	1	1	1	5	3
International Technical Communication	1	1	1	1	N/A
Management	4	8	7	5	N/A
Mathematics	2	1	4	3	1
Mechanical Engineering Technology	54	72	75	70	63
Mechatronics Engineering	N/A	N/A	N/A	0	27
Physics	1	10	5	3	6
Software Engineering	13	14	14	16	13
Surveying and Mapping	1	2	0	1	2
Technical Communication	N/A	N/A	N/A	N/A	1
Technical and Professional Communication	0	2	2	2	0
Telecommunications Engineering Technology	3	3	3	5	1
<b>Totals</b>	<b>443</b>	<b>435</b>	<b>432</b>	<b>436</b>	<b>485</b>

**New Freshmen By School  
Fall 2003-2007**

	Fall 2003	Fall 2004	Fall 2005	Fall 2006	Fall 2007
School of Arts/Sciences	76	68	62	64	58
School of Eng. Tech./Mgt.	153	163	165	155	170
School of Arch., CET, and Const.	142	132	143	143	196
School of Comp. and SWE	72	72	62	74	61
<b>Totals</b>	<b>443</b>	<b>435</b>	<b>432</b>	<b>436</b>	<b>485</b>

Source: SPSU Web Report WSAR 0100

**New Transfers by Major  
Fall 2003-2007**

	Fall 03	Fall 04	Fall 05	Fall 06	Fall 07
Apparel/Textile Engr. Tech./Fashion Design	7	2	5	3	1
Applied Science	0	0	0	1	0
Architecture	54	61	89	62	66
Biology	8	6	11	14	15
Business Administration	N/A	N/A	N/A	8	32
Business Management	N/A	N/A	N/A	N/A	2
Civil Engineering Technology	31	34	40	37	49
Computer Engineering Technology	14	17	12	17	16
Computer Science	38	23	26	19	35
Construction Engineering	N/A	N/A	N/A	4	8
Construction Management	29	48	47	45	38
Electrical Engineering Technology	40	36	41	44	37
English and Professional Communication	N/A	N/A	N/A	0	1
General Studies/Undecided	22	22	19	16	17
Industrial Engineering Technology	6	10	14	11	15
Information Technology	24	23	16	10	20
Information Technology (Web)	N/A	2	3	6	11
International Studies	1	1	3	8	4
International Technical Communication	1	0	0	1	N/A
Management	33	15	31	16	0
Mathematics	5	4	7	3	6
Mechanical Engineering Technology	34	58	54	53	50
Mechatronics Engineering	N/A	N/A	N/A	N/A	5
Physics	7	1	4	3	3
Pre-Technical Communication	N/A	N/A	N/A	8	N/A
Software Engineering	5	5	5	9	8
Surveying and Mapping	7	8	8	3	10
Technical Communication	N/A	N/A	N/A	N/A	20
Technical and Professional Communication	2	4	1	13	N/A
Telecommunications Engineering Technology	8	8	8	4	7
Totals	376	388	444	418	476

**New Transfers By School  
Fall 2003-2007**

	Fall 2003	Fall 2004	Fall 2005	Fall 2006	Fall 2007
School of Arts/Sciences	46	38	45	66	66
School of Eng. Tech./Mgt.	142	146	165	157	214
School of Arch., CET, and Const.	121	151	184	151	122
School of Comp. and SWE	67	53	50	44	74
Totals	376	388	444	418	476

Source: SPSU Web Report WSAR0100

**New Graduate Students by Major  
Fall 2003-2007**

	Fall 03	Fall 04	Fall 05	Fall 06	Fall 07
Computer Science	24	24	17	17	29
Construction	13	7	4	9	17
Engineering Technology-Electrical	5	7	8	9	9
Information Design and Communication	N/A	1	13	10	8
Information Technology	24	15	13	21	16
MBA	24	33	32	31	27
Quality Assurance	14	25	29	30	21
Software Engineering	7	11	9	10	6
Systems Engineering	1	2	1	7	8
Technical and Professional Communication	14	N/A	N/A	N/A	N/A
Totals	126	125	126	144	141

**New Graduate Students By School  
Fall 2003-2007**

	Fall 2003	Fall 2004	Fall 2005	Fall 2006	Fall 2007
School of Arts/Sciences	14	1	13	10	8
School of Eng. Tech./Mgt.	44	67	70	77	65
School of Arch., CET, and Const.	13	7	4	9	17
School of Comp. and SWE	55	50	39	48	51
Totals	126	125	126	144	141





# SOUTHERN POLYTECHNIC STATE UNIVERSITY

## Student Information

Unduplicated Headcount by Student Level .....	C-1
Headcount Enrollment by Level of Classification .....	C-1
Headcount and FTE Enrollment .....	C-1
USG Headcount Enrollment .....	C-2
Total Headcount by School and Gender .....	C-3
Enrollment by Major and Gender .....	C-4
SPSU Students by Georgia County Fall 2007 .....	C-7
Non-US Countries Contributing Students Fall 2007 .....	C-8
Non-US Countries Represented by Gender Fall 2007 .....	C-9
Non-US Countries Represented by Enrollment Status Fa 07 ....	C-9
Non-US Countries Represented by Academic Level Fa 07 .....	C-9
Headcount Enrollment by Race/Ethnicity .....	C-10
Distribution of Undergraduate Students by Age .....	C-10
Distribution of Graduate Students by Age .....	C-10
Headcount Enrollment by Gender .....	C-11
Undergraduate Headcount Enrollment by Status .....	C-11
Graduate Headcount Enrollment by Status .....	C-11
Total Enrollment by Student Type .....	C-12
New Students by Classification .....	C-12
Top Feeder Inst. of Transfer Students Su 07, Fa 07, Spr 08 .....	C-13
Grade Distribution by Term .....	C-14
Average GPA by Term .....	C-15
Continuing Education Enrollment .....	C-15



**Unduplicated Headcount by Student Level  
AY 2003-2006**

**Table One**

	<b>AY 03-04</b>	<b>AY 04-05</b>	<b>AY 05-06</b>	<b>AY 06-07*</b>
Graduate Degree	672	621	532	587
Graduate Certificate	52	67	62	88
Undergraduate Degree	3668	3743	3844	4162
Undergraduate Certificate	40	41	38	69

\* Revised

**Headcount Enrollment by Level of Classification  
Fall 2003-2007**

**Table Two**

	<b>Fall 2003</b>	<b>Fall 2004</b>	<b>Fall 2005</b>	<b>Fall 2006</b>	<b>Fall 2007</b>
Graduate	583	546	476	526	523
Undergraduate	3119	3195	3278	3584	3837
Transient/Others	68	62	53	97	100
Totals	3770	3803	3807	4207	4460

**Headcount and FTE Enrollment  
Fall 2003-2007**

**Table Three**

	<b>Fall 2003</b>	<b>Fall 2004</b>	<b>Fall 2005</b>	<b>Fall 2006</b>	<b>Fall 2007</b>
FTE	3103	3157	3184	3523	3818
Total Headcount	3770	3803	3807	4207	4460

Source: SPSU Web Report WSHR 1000-Table One  
Source: USG Semester Enrollment Report-Tables Two and Three

**University System of Georgia Headcount Enrollment  
Fall 2003-2007**

<b>Institutions</b>	<b>Fall 03</b>	<b>Fall 04</b>	<b>Fall 05</b>	<b>Fall 06</b>	<b>Fall 2007</b>
Georgia Institute of Technology	16,649	16,841	17,135	17,936	18,747
Georgia State University	28,042	27,261	25,967	26,135	27,134
Medical College of Georgia	2,526	2,556	2,585	2,696	2,862
University of Georgia	33,878	33,405	33,660	33,959	33,831
<i>Research Universities</i>	<i>81,095</i>	<i>80,063</i>	<i>79,347</i>	<i>80,726</i>	<i>82,574</i>
Georgia Southern University	15,704	16,100	16,646	16,425	16,841
Valdosta State University	10,547	10,400	10,503	10,888	11,280
<i>Regional Universities</i>	<i>26,251</i>	<i>26,500</i>	<i>27,149</i>	<i>27,313</i>	<i>28,121</i>
Albany State University	3,681	3,668	3,649	3,927	4,033
Armstrong Atlantic State University	6,653	7,009	6,710	6,728	6,848
Augusta State University	6,135	6,368	6,333	6,573	6,588
Clayton College & State University	5,661	5,954	6,212	6,081	6,043
Columbus State University	6,937	7,224	7,475	7,597	7,593
Fort Valley State University	2,537	2,558	2,174	2,176	2,562
Georgia College & State University	5,695	5,531	5,662	6,040	6,249
Georgia Southwestern State University	2,410	2,323	2,427	2,457	2,405
Kennesaw State University	17,485	17,961	18,556	19,854	20,607
North Georgia College & State University	4,517	4,552	4,765	4,922	5,227
Savannah State University	2,752	2,800	3,091	3,241	3,169
Southern Polytechnic State University	3,770	3,803	3,807	4,207	4,460
University of West Georgia	10,255	10,216	10,154	10,163	10,677
<i>Comprehensive Universities</i>	<i>78,488</i>	<i>79,967</i>	<i>81,015</i>	<i>83,966</i>	<i>86,461</i>
Abraham Baldwin Agricultural College	3,407	3,362	3,423	3,574	3,665
Dalton State College	4,201	4,252	4,267	4,349	4,532
Gainesville State College	5,282	5,781	5,985	6,719	7,474
Georgia Gwinnett College	N/A	N/A	0	118	788
Gordon College	3,415	3,449	3,500	3,596	3,703
Macon State College	5,403	5,733	6,150	6,244	6,464
Middle Georgia College	2,517	2,627	2,677	3,051	3,444
<i>State Colleges</i>	<i>24,225</i>	<i>25,204</i>	<i>26,002</i>	<i>27,651</i>	<i>30,070</i>
Atlanta Metropolitan College	1,907	1,802	1,748	1,683	1,882
Bainbridge College	2,268	2,620	2,475	2,783	2,661
Coastal Georgia Community College	2,818	2,879	3,063	3,054	2,942
Darton College	3,811	4,126	4,578	4,679	4,760
East Georgia College	1,420	1,318	1,511	1,719	1,987
Georgia Highlands College	3,293	3,416	3,817	3,933	4,346
Georgia Perimeter College	18,986	20,316	20,461	19,955	21,473
South Georgia College	1,431	1,443	1,504	1,465	1,756
Waycross College	1,027	1,005	882	1,018	989
<i>Two-Year Colleges</i>	<i>36,961</i>	<i>38,925</i>	<i>40,039</i>	<i>40,289</i>	<i>42,796</i>
<b>System Totals</b>	<b>247,020</b>	<b>250,659</b>	<b>253,552</b>	<b>259,945</b>	<b>270,022</b>

Source: USG Semester Enrollment Report

**Total Headcount by School by Gender  
Fall 2003-2007**

	Fa03			Fa04			Fa05			Fa06			Fa07		
	M	F	Total	M	F	Total	M	F	Total	M	F	Total	M	F	Total
Arts/Sciences	221	166	387	226	149	375	250	165	415	258	189	447	268	205	473
Engr. Tech/Mgt	1259	278	1537	1279	244	1523	1292	226	1518	1393	242	1635	1462	258	1720
Arch., CET, Cnst.	781	165	946	861	186	1047	942	219	1161	1107	256	1363	1217	291	1508
Computer, SWE	695	187	882	674	162	836	590	123	713	628	134	762	621	144	765

Source: SPSU Web Report WSFR0215

**Enrollment by Major and Gender  
Fall 2003-2007**

	Fall 03			Fall 04			Fall 05			Fall 06			Fall 07		
	Male	Female	Total	Male	Female	Total	Male	Female	Total	Male	Female	Total	Male	Female	Total
All Certificates	40	15	55	39	28	67	40	29	69	75	32	107	58	27	85
Business Continuity	N/A	N/A	N/A	N/A	N/A	N/A	N/A	N/A	N/A	N/A	N/A	N/A	1	0	1
Computer Programming	3	1	4	1	1	2	1	0	1	2	0	2	0	0	0
Computer Science (Post Bacc.)	13	2	15	10	5	15	8	6	14	15	4	19	8	4	12
Information Security (Post Bacc.)	N/A	N/A	N/A	N/A	N/A	N/A	N/A	N/A	N/A	1	0	1	0	1	1
Information Technology (Post Bacc.)	0	0	0	2	1	3	0	2	2	5	3	8	4	1	5
Land Development	0	2	2	1	0	1	0	0	0	5	0	5	4	1	5
Land Surveying	10	0	10	4	1	5	9	2	11	13	2	15	15	0	15
Project Management	3	6	9	5	6	11	6	3	9	16	5	21	11	7	18
Quality Assurance (Post Bacc.)	1	1	2	1	0	1	2	2	4	3	4	7	2	0	2
Quality Principles	0	0	0	0	0	0	0	0	0	0	1	1	0	0	0
Software Engineering (Post Bacc.)	3	0	3	1	1	2	2	2	4	1	1	2	1	0	1
Specialty Construction	5	1	6	2	0	2	3	0	3	2	1	3	4	0	4
Systems Engineering (Post Bacc.)	2	2	4	7	2	9	7	0	7	9	0	9	5	1	6
Tech and Profess Comm (Post Bacc.)	N/A	N/A	N/A	5	11	16	2	12	14	3	11	14	3	12	15

	Fall 03			Fall 04			Fall 05			Fall 06			Fall 07		
	Male	Female	Total	Male	Female	Total	Male	Female	Total	Male	Female	Total	Male	Female	Total
<b>Undergraduate</b>	2,601	572	3,173	2,694	546	3,240	2,757	568	3,325	3,024	632	3,656	3,196	712	3,908
Apparel Engineering Technology	0	2	2	0	0	0	0	1	1	2	1	3	N/A	N/A	N/A
Apparel/Textile (Fashion Design)	20	34	54	11	19	30	14	14	28	11	14	25	4	12	16
Applied Science	1	1	2	1	2	3	2	0	2	1	0	1	4	1	5
Architecture	17	4	21	64	23	87	315	124	439	358	146	504	359	165	524
Biology	18	20	38	29	41	70	54	42	96	47	49	96	54	65	119
Business Administration	N/A	N/A	N/A	N/A	N/A	N/A	1	0	1	30	15	45	97	32	129
Business Management	N/A	N/A	N/A	N/A	N/A	N/A	N/A	N/A	N/A	N/A	N/A	N/A	4	2	63
Civil Engineering Technology	225	30	255	247	29	276	268	37	305	307	42	349	327	42	369
Computer Engineering Technology	181	20	201	156	23	179	121	13	134	134	17	151	137	16	153
Computer Science	353	50	403	286	34	320	219	26	245	229	21	250	221	29	250
Construction Development	N/A	N/A	N/A	N/A	N/A	N/A	N/A	N/A	N/A	10	1	11	13	1	14
Construction Engineering	N/A	N/A	N/A	N/A	N/A	N/A	N/A	N/A	N/A	20	4	24	55	14	69
Construction Management	206	15	221	258	31	289	274	43	317	315	45	360	347	48	395
Electrical Engineering Technology	311	27	338	317	30	347	315	30	345	334	27	361	307	34	341
English and Professional Communication	N/A	N/A	N/A	N/A	N/A	N/A	N/A	N/A	N/A	1	7	8	5	9	14
General Studies/Undeclared	117	60	177	83	21	104	84	26	110	84	31	115	72	21	93
Industrial Distribution	0	1	1	0	1	1	0	1	1	0	0	0	0	0	0
Industrial Engineering Technology	97	31	128	102	20	122	109	25	134	99	25	124	114	28	142
Information Technology	116	26	142	145	32	177	153	31	184	152	26	178	148	32	180
Information Technology (Web)	N/A	N/A	N/A	4	1	5	8	4	12	17	9	26	27	13	40
International Studies	8	6	14	7	6	13	14	12	26	21	20	41	34	20	54
International Technical Communication	1	4	5	2	6	8	0	5	5	1	8	9	N/A	N/A	N/A
Management	129	65	194	126	55	181	130	54	184	105	45	150	59	24	83
Mathematics	23	15	38	26	13	39	33	16	49	37	16	53	38	18	56
Mechanical Engineering Technology	335	14	349	390	19	409	419	19	438	470	17	487	464	27	491
Mechatronics Engineering	N/A	N/A	N/A	N/A	N/A	N/A	N/A	N/A	N/A	N/A	N/A	N/A	59	3	62
Physics	21	6	27	41	5	46	31	4	35	28	4	32	26	5	31
Software Engineering	54	9	63	73	8	81	83	5	88	104	4	108	103	4	107
Systems Engineering	N/A	N/A	N/A	N/A	N/A	N/A	N/A	N/A	N/A	N/A	N/A	N/A	2	0	2
Surveying and Mapping	31	4	35	42	5	47	46	5	51	39	2	40	49	2	51
Technical Communication	N/A	N/A	N/A	N/A	N/A	N/A	N/A	N/A	N/A	N/A	N/A	N/A	12	18	30
Technical and Professional Communication	20	20	40	23	28	51	19	26	45	25	31	56	17	22	39
Telecommunications Engineering Technology	56	9	65	42	7	49	42	5	47	43	5	48	38	5	43

## Enrollment by Major and Gender (continued)

	Fall 03			Fall 04			Fall 05			Fall 06			Fall 07		
	Male	Female	Total	Male	Female	Total	Male	Female	Total	Male	Female	Total	Male	Female	Total
<b>Graduate</b>	317	212	529	318	170	488	277	136	413	288	156	444	314	159	473
Computer Science	78	52	130	63	39	102	47	25	72	46	33	79	48	31	79
Construction	27	10	37	24	10	34	21	5	26	22	8	30	33	11	44
Engineering Technology-Electrical	34	8	42	28	5	33	23	3	26	25	2	27	34	1	35
Information Design and Communication	N/A	N/A	N/A	0	1	1	7	14	21	9	14	23	7	15	22
Information Technology	41	41	82	48	30	78	42	13	55	34	19	53	35	19	54
MBA	40	20	60	55	29	84	53	34	87	56	36	92	59	41	100
Management	4	14	18	1	2	3	N/A	N/A	N/A	N/A	N/A	N/A	N/A	N/A	N/A
Quality Assurance	46	25	71	44	26	70	47	25	72	58	29	87	59	27	86
Software Engineering	34	6	40	41	10	51	24	9	33	25	11	36	25	10	35
Systems Engineering	0	1	1	4	1	5	7	0	7	13	4	17	14	4	18
Technical and Professional Communication	13	35	48	10	17	27	6	8	14	N/A	N/A	N/A	N/A	N/A	N/A
<b>Total University</b>	2,956	796	3,752	3,040	741	3,781	3,074	733	3,807	3,386	821	4,207	3,568	898	4,466
School of Arts & Sci	221	166	387	226	149	375	250	165	415	258	189	447	268	205	473
School of Eng Tech & Mgt	1,259	278	1,537	1,279	244	1,523	1,292	226	1,518	1,393	242	1,635	1,462	258	1,720
School of Arch, CET & Const	781	165	946	861	186	1,047	942	219	1,161	1,107	256	1,363	1,217	291	1,508
School of Comp & SE	695	187	882	674	162	836	590	123	713	628	134	762	621	144	765

Source: SPSU Web Report WSFR0215 and USG Semester Enrollment Report



**SPSU Students by Georgia County  
Fall 2007**

Cobb	1009	Walker	15	Banks	3
Gwinnett	430	Murray	14	Coffee	3
Fulton	346	Oconee	13	Emanuel	3
Dekalb	292	Pickens	13	Grady	3
Cherokee	203	Dougherty	12	Harris	3
Douglas	100	White	12	Jones	3
Paulding	96	Camden	11	Liberty	3
Fayette	83	Thomas	10	Lumpkin	3
Clayton	82	Decatur	9	Pike	3
Henry	81	Habersham	9	Terrell	3
Forsyth	66	Bulloch	8	Tift	3
Bartow	62	Burke	8	Ware	3
Hall	61	Glynn	8	Appling	2
Coweta	50	Hart	8	Brooks	2
Rockdale	41	Stephens	8	Butts	2
Whitfield	38	Baldwin	7	Dooly	2
Gordon	33	Fannin	7	Effingham	2
Walton	31	Haralson	7	Jasper	2
Muscogee	29	Meriwether	6	Laurens	2
Richmond	29	Sumter	6	Madison	2
Floyd	28	Union	6	Mitchell	2
Carroll	25	Chattooga	5	Pulaski	2
Houston	25	Dawson	5	Taylor	2
Newton	25	Jackson	5	Towns	2
Chatham	24	Lee	5	Ben Hill	1
Catoosa	22	Morgan	5	Brantley	1
Columbia	21	Peach	5	Crawford	1
Lowndes	19	Colquitt	4	Dodge	1
Bibb	18	Dade	4	Greene	1
Gilmer	18	Franklin	4	Lamar	1
Barrow	17	Heard	4	Macon	1
Clarke	17	McDuffie	4	Monroe	1
Spalding	16	Oglethorpe	4	Screven	1
Polk	15	Washington	4	Wayne	1
Troup	15	Wilkes	4		

**Non-US Countries Contributing Students  
Fall 2007**

China	107	South Africa	2
India	75	Tanzania	2
Colombia	17	Togo	2
Turkey	14	United Kingdom	2
Kenya	12	Vietnam	2
Nigeria	11	Zimbabwe	2
Jamaica	10	Anguilla	1
Germany	9	Argentina	1
Mexico	7	Australia	1
Venezuela	7	Bolivia	1
Canada	5	Congo	1
Nepal	5	Costa Rica	1
South Korea	5	Cuba	1
Bahamas	4	Czech Republic	1
Bangladesh	4	Denmark	1
Cameroon	4	El Salvador	1
Ghana	4	Eritrea	1
Ivory Coast	4	Gabon	1
Japan	4	Gambia	1
Taiwan	4	Guinea	1
Thailand	4	Indonesia	1
Brazil	3	Italy	1
Iran	3	Lebanon	1
Peru	3	Lithuania	1
Russia	3	Nicaragua	1
Saudi Arabia	3	Panama	1
British Virgin Is.	2	Pakistan	1
Ecuador	2	Philippines	1
Ethiopia	2	Qatar	1
Haiti	2	Serbia	1
Israel	2	Singapore	1
Mali	2	Spain	1
Morocco	2	St. Lucia	1
Poland	2	Turks/Caicos	1
Senegal	2	Uganda	1

Source: Open Doors Survey

**Non-US Countries Represented by Gender  
Fall 2007**

	<b>Undergraduate</b>	<b>Graduate</b>	<b>Totals</b>
Male	146	90	236
Female	100	54	154
Totals	246	144	390

**Non-US Countries Represented by Enrollment Status  
Fall 2007**

	<b>Undergraduate</b>	<b>Graduate</b>	<b>Totals</b>
Full-Time	209	107	316
Part-Time	37	37	74
Totals	246	144	390

**Non-US Countries Represented by Academic Level  
Fall 2007**

	<b>Undergraduate</b>	<b>Graduate</b>	<b>Totals</b>
Freshmen	64	N/A	64
Sophomore	40	N/A	40
Junior	53	N/A	53
Senior	88	N/A	88
Graduate	N/A	141	141
Non-Degree	1	3	4
Totals	246	144	390

**Headcount Enrollment by Race/Ethnicity  
Fall 2003-2007**

	Fall 2003	Fall 2004	Fall 2005	Fall 2006	Fall 2007
Non-Resident Alien	366	357	328	395	414
Black	829	800	793	838	889
American Indian	8	7	8	11	16
Asian	245	247	220	228	228
Hispanic	102	95	100	127	168
White	2218	2295	2358	2608	2745
Totals	3768	3801	3807	4207	4460

**Distribution of Undergraduate Students by Age  
Fall 2007**

	Under 18	18-19	20-21	22-24	25-29	30-34	35-39	40-49	50-64	65 and Over
Fall 2007	24	806	876	989	582	285	183	145	38	0

**Distribution of Graduate Students by Age  
Fall 2007**

	Under 18	18-19	20-21	22-24	25-29	30-34	35-39	40-49	50-64	65 and Over
Fall 2007	1	0	10	80	145	95	68	77	34	0

Source: IPEDS Fall 2007 Enrollment Survey

**Headcount Enrollment by Gender  
Fall 2003-2007**

	<b>Fall 2003</b>	<b>Fall 2004</b>	<b>Fall 2005</b>	<b>Fall 2006</b>	<b>Fall 2007</b>
Female	804	746	733	818	896
Male	2964	3055	3074	3389	3564
Totals	3768	3801	3807	4207	4460

**Undergraduate Headcount Enrollment by Status  
Fall 2003-2007**

	<b>Fall 2003</b>	<b>Fall 2004</b>	<b>Fall 2005</b>	<b>Fall 2006</b>	<b>Fall 2007</b>
Part-Time	1188	1173	1137	1246	1207
Full-Time	1997	2082	2194	2435	2730
Totals	3185	3255	3331	3681	3937

**Graduate Headcount Enrollment by Status  
Fall 2003-2007**

	<b>Fall 2003</b>	<b>Fall 2004</b>	<b>Fall 2005</b>	<b>Fall 2006</b>	<b>Fall 2007</b>
Part-Time	378	383	324	377	349
Full-Time	205	163	152	149	174
Totals	583	546	476	526	523

**Total Enrollment by Student Type  
Fall 2003-2007**

	<b>Fall 2003</b>	<b>Fall 2004</b>	<b>Fall 2005</b>	<b>Fall 2006</b>	<b>Fall 2007</b>
Other	33	23	26	48	41
Transient	35	39	27	49	59
Graduate	583	546	476	526	523
Senior	961	986	1023	1160	1261
Junior	628	656	744	755	834
Sophomore	650	705	709	823	858
Freshmen	837	835	796	832	874
Joint Enrolled	43	13	6	14	10
<b>Totals</b>	<b>3770</b>	<b>3803</b>	<b>3807</b>	<b>4207</b>	<b>4460</b>

**New Students by Classification  
Fall 2003-2007**

	<b>Fall 2003</b>	<b>Fall 2004</b>	<b>Fall 2005</b>	<b>Fall 2006</b>	<b>Fall 2007</b>
Other	12	12	5	16	17
Transient	21	27	21	49	42
Graduate	140	136	128	185	142
Transfer	376	397	426	411	473
Freshmen Beg.	462	443	435	443	501
Joint Enrolled	42	11	6	14	7
<b>Totals</b>	<b>1053</b>	<b>1026</b>	<b>1021</b>	<b>1118</b>	<b>1182</b>

**Top Feeder Institutions of Transfer Students  
Summer 2007, Fall 2007, Spring 2008**

<b>All Majors (5 or more)</b>	
Georgia Perimeter College	60
Chattahoochee Technical College	55
Georgia Highlands (Floyd)	50
Kennesaw State University	47
Georgia Institute of Technology	31
Gainesville State College	24
Georgia Southern University	20
Georgia State University	19
University of West Georgia	17
Gwinnett Technical College	15
Clayton State University	11
Dalton State College	9
University of Phoenix	9
Dekalb Technical College	8
Berry College	7
Gordon College	7
Valdosta State University	7
Armstrong Atlantic State University	6
Athens Technical College	6
Auburn University	6
Darton College	6
Abraham Baldwin Agricultural College	5
Albany State University	5
Augusta Technical College	5
Columbus State University	5
Devry Institute of Technology-Georgia	5
Georgia Military College	5
Tuskegee University	5

**Grade Distribution by Term  
2003-2007**

	Percent A's	Percent B's	Percent C's	Percent D's	Percent F's	Percent Other*	Average GPA
03-04							
Summer 03	36%	28%	14%	4%	5%	13%	2.98
Fall 03	29%	30%	16%	5%	6%	14%	2.80
Spring 04	28%	30%	16%	5%	7%	14%	2.79
04-05							
Summer 04	33%	29%	17%	4%	5%	12%	2.94
Fall 04	28%	29%	17%	6%	7%	13%	2.75
Spring 05	29%	28%	17%	5%	8%	13%	2.75
05-06							
Summer 05	33%	30%	15%	4%	4%	14%	2.95
Fall 05	30%	29%	17%	5%	6%	13%	2.82
Spring 06	29%	28%	17%	5%	7%	14%	2.76
06-07							
Summer 06	36%	27%	15%	4%	6%	12%	2.93
Fall 06	29%	28%	17%	6%	8%	12%	2.72
Spring 07	30%	29%	16%	5%	8%	12%	2.78
07-08							
Summer 07	38%	28%	16%	4%	4%	10%	3.02
Fall 07	31%	29%	17%	5%	7%	11%	2.81
Spring 08	32%	27%	16%	5%	7%	13%	2.81

\* Includes I, IP, K, NR, S, U, V, W, WF



**Average GPA by Term  
2003-2007**

**Table One**

	<b>03-04</b>	<b>04-05</b>	<b>05-06</b>	<b>06-07</b>	<b>07-08</b>
Summer	2.98	2.94	2.95	2.93	3.02
Fall	2.80	2.75	2.82	2.72	2.81
Spring	2.79	2.75	2.76	2.78	2.81

**Continuing Education Enrollment  
2003-2007**

**Table Two**

	<b>2003</b>	<b>2004</b>	<b>2005-06*</b>	<b>2006-07*</b>	<b>2007-08*</b>
Programs/Courses	389	420	619	595	502
Participants	2,938	3,075	2,643	3,005	3,409
Con Ed Units (CEU's)	4,443	4,237	4,288	4,934	4,981

\* Summer, Fall, Spring sequence

Source: Table One-SPSU Web Report WSHR0710

Source: Table Two-SPSU Office of Continuing Education





# SOUTHERN POLYTECHNIC STATE UNIVERSITY

## Graduation/Retention Information

Total Degrees Awarded .....	D-1
Degrees Awarded	
by Level .....	D-1
by School and Gender .....	D-1
by Race/Ethnicity - Men .....	D-2
by Race/Ethnicity - Women .....	D-2
by School, Level and Gender .....	D-3
by School, Level, Major and Gender .....	D-5
Reported Average Starting Salaries of Graduates .....	D-7
One Year Retention Rate FTFT Freshmen .....	D-8
Retention and Graduation Rates FTFT Freshmen .....	D-9
Bachelor's Degree 6 Year Graduation Rates .....	D-13
Graduation Rates Fall 2001 Cohort .....	D-14

**Graduation/Retention Info.**



**Total Degrees Awarded  
FY 03 to FY 07**

	<b>FY 03</b>	<b>FY 04</b>	<b>FY 05</b>	<b>FY 06</b>	<b>FY 07</b>
Total Degrees	616	639	629	601	624

**Degrees Awarded by Level  
FY 03 to FY 07**

	<b>FY 03</b>	<b>FY 04</b>	<b>FY 05</b>	<b>FY 06</b>	<b>FY 07</b>
Masters	200	192	192	155	154
Post Bach Cert	0	2	0	3	2
Bachelors	386	421	433	434	458
Associates	6	5	2	4	2
Certificate	24	19	2	5	8
Totals	616	639	629	601	624

**Degrees Awarded by School and Gender  
FY 03 to FY 07**

	<b>FY 03</b>			<b>FY 04</b>			<b>FY 05</b>			<b>FY 06</b>			<b>FY 07</b>		
	M	F	Tot	M	F	Tot	M	F	Tot	M	F	Tot	M	F	Tot
Arts & Sci.	23	29	52	14	22	36	26	23	49	21	26	47	32	31	63
ACC	82	18	100	92	27	119	105	25	130	106	21	127	119	29	148
CS/SWE	135	81	216	155	61	216	138	52	190	120	42	162	119	32	151
Tech/Mgt.	198	50	248	213	55	268	194	66	260	204	61	265	214	48	262
Totals	438	178	616	474	165	639	463	166	629	451	150	601	484	140	624

Source: IPEDS Completions Surveys

**Degrees Awarded by Race/Ethnicity- Men  
FY 07**

	Non-Res. Alien	Black	Amer. Indian	Asian	Hispanic	White	Totals
Certificate	0	2	0	0	0	5	7
Associate	0	0	0	0	0	2	2
Bachelors	21	65	1	28	8	256	379
Post Bach Cert	0	0	0	0	0	0	0
Masters	39	23	0	4	1	29	96
Totals	60	90	1	32	9	292	484

**Degrees Awarded by Race/Ethnicity- Women  
FY 07**

	Non-Res. Alien	Black	Amer. Indian	Asian	Hispanic	White	Totals
Certificate	0	0	0	0	0	1	1
Associate	0	0	0	0	0	0	0
Bachelors	9	24	0	10	2	34	79
Post Bach Cert	0	1	0	0	0	1	2
Masters	27	16	0	1	1	13	58
Totals	36	41	0	11	3	49	140

Degrees Awarded by School, Level, and Gender  
FY 03 to FY 07

School/Degrees	FY 03			FY 04			FY 05			FY 06			FY 07		
	M	F	Total	M	F	Total	M	F	Total	M	F	Total	M	F	Total
Arch/CET/Cnst Certificate	1	0	1	1	2	3				4	1	5	7	1	8
Associate	0	0	0	0	0	0	0	0	0	0	0	0	0	0	0
Bachelors	73	17	90	80	24	104	91	17	108	95	18	113	106	23	129
Post Bach Cert	0	0	0	0	0	0	0	0	0	0	0	0	0	0	0
Masters	8	1	9	11	1	12	14	6	20	7	2	9	6	5	11
Total	82	18	100	92	27	119	105	25	130	106	21	127	119	29	148
Arts & Sciences Certificate	0	0	0	0	0	0	0	0	0	0	0	0	0	0	0
Associate	4	2	6	4	1	5	1	1	2	2	2	4	2	0	2
Bachelors	15	6	21	10	9	19	18	11	29	13	15	28	28	24	52
Post Bach Cert	0	0	0	0	0	0	0	0	0	2	1	3	0	1	1
Masters	4	21	25	0	12	12	7	11	18	4	8	12	2	6	8
Total	23	29	52	14	22	36	26	23	49	21	26	47	32	31	63
Computing/SWE Certificate	13	7	20	14	1	15	0	0	0	0	0	0	0	0	0
Associate	0	0	0	0	0	0	0	0	0	0	0	0	0	0	0
Bachelors	66	18	84	82	17	99	85	10	95	76	17	93	69	8	77
Post Bach Cert	0	0	0	1	1	2	0	0	0	0	0	0	0	1	1
Masters	56	56	112	58	42	100	53	42	95	44	25	69	50	23	73
Total	135	81	216	155	61	216	138	52	190	120	42	162	119	32	151
Technology/Mgt Certificate	2	1	3	1	0	1	0	0	0	0	0	0	0	0	0
Associate	0	0	0	0	0	0	0	0	0	0	0	0	0	0	0
Bachelors	157	34	191	175	24	199	159	42	201	158	42	200	176	24	200
Post Bach Cert	0	0	0	0	0	0	0	0	0	0	0	0	0	0	0
Masters	39	15	54	37	31	68	35	24	59	46	19	65	38	24	62
Total	198	50	248	213	55	268	194	66	260	204	61	265	214	48	262

Degrees Awarded by School, Level, and Gender (continued)  
 FY 03 to FY 07

	FY 03			FY 04			FY 05			FY 06			FY 07		
	M	F	Total	M	F	Total	M	F	Total	M	F	Total	M	F	Total
Total University															
Certificate	16	8	24	16	3	19				4	1	5	7	1	8
Associate	4	2	6	4	1	5	1	1	2	2	2	4	2	0	2
Bachelors	311	75	386	347	74	421	353	80	433	342	92	434	379	79	458
Post Bach Cert	N/A	N/A	N/A	1	1	2	0	0	0	2	1	3	0	2	2
Masters	107	93	200	106	86	192	109	83	192	101	54	155	96	58	154
Total	438	178	616	474	165	639	463	166	629	451	150	601	484	140	624
Annual % Change	6%	24%	10%	8%	(7%)	4%	(2%)	1%	(2%)	(3%)	(10%)	(4%)	7%	(7%)	4%



Degrees Awarded by School, Level, Major, and Gender  
FY 03 to FY 07

Schools	FY 03			FY 04			FY 05			FY 06			FY 07		
	M	F	Total	M	F	Total	M	F	Total	M	F	Total	M	F	Total
Arch/CET/Cnst															
Cert Proj. Mgt/Specialty Cnst	1	0	1	1	2	3	0	2	2	1	1	2	5	1	6
Cert Surveying	0	0	0	0	0	0	0	0	0	3	0	3	2	0	2
Bach Architecture	13	5	18	18	11	29	32	8	40	27	7	34	25	8	33
BS Civil Engr Tech	28	9	37	30	8	38	23	5	28	25	6	31	27	8	35
BS Construction Management	27	3	30	30	4	34	32	4	36	38	5	43	46	7	53
BS Environ. Des.	1	0	1	N/A	N/A	N/A	N/A	N/A	N/A	N/A	N/A	N/A	N/A	N/A	N/A
BS Surveying/Mapping	4	0	4	2	1	3	4	0	4	5	0	5	8	0	8
MS Construction Management	8	1	9	11	1	12	14	6	20	7	2	9	6	5	11
Total Degrees	82	18	100	92	27	119	105	25	130	106	21	127	119	29	148
School % of Total Univ Deg Awd	13%	3%	16%	14%	4%	18%	17%	4%	21%	18%	3%	21%	19%	5%	24%
Annual % Change	(15%)	38%	(9%)	12%	50%	19%	14%	(7%)	9%	1%	(2%)	(2%)	12%	4%	17%
Arts & Sciences															
Cert Comm.	N/A	N/A	N/A	N/A	N/A	N/A	N/A	N/A	N/A	N/A	N/A	N/A	0	1	1
AS General Studies	4	2	6	4	1	5	1	1	2	2	2	4	2	0	2
BS/BA TCOM/Engl/Tech Comm	8	5	13	2	4	6	5	5	10	4	8	12	11	10	21
BS/BA Mathematics	7	1	8	7	3	10	7	3	10	5	6	11	5	3	8
BS/BA Physics	0	0	0	1	2	3	3	2	5	2	0	2	6	0	6
BS/BA Biology	N/A	N/A	N/A	N/A	N/A	N/A	2	1	3	2	0	2	3	9	12
BS International Studies	N/A	N/A	N/A	N/A	N/A	N/A	1	0	1	2	2	4	3	2	5
MS TCOM/Info. Design	4	21	25	0	12	12	7	11	18	4	8	12	2	6	8
Total Degrees	23	29	52	14	22	36	26	23	49	21	26	47	32	31	63
School % of Total Univ Deg Awd	4%	5%	9%	2%	4%	6%	4%	4%	8%	4%	4%	8%	5%	5%	10%
Annual % Change	(15%)	(6%)	(10%)	(39%)	(24%)	(31%)	86%	5%	36%	(19%)	13%	(4%)	52%	19%	34%
Computing/SWE															
Cert Computer Program	2	1	3	0	0	0	0	0	0	0	0	0	0	0	0
Cert Computer Science	2	1	3	6	0	6	0	0	0	0	0	0	0	0	0
Cert Computer Sci/Info Sci	N/A	N/A	N/A	3	0	3	0	0	0	0	0	0	0	0	0
Cert Info Tech (Post Bach)	N/A	N/A	N/A	1	1	2	0	0	0	0	0	0	0	0	0
Cert Soft Systems Dev	9	3	12	0	0	0	0	0	0	0	0	0	0	0	0
Cert Soft Engr.	0	1	1	5	1	6	0	0	0	0	0	0	0	1	1
Cert Systems Engr	0	1	1	0	0	0	0	0	0	0	0	0	0	0	0
BS/ Computer Sci/Info Tech	0	0	0	41	5	46	N/A	N/A	N/A	N/A	N/A	N/A	N/A	N/A	N/A
BS/BA Computer Science	46	15	61	24	8	32	61	6	67	40	6	46	34	3	37

**Degrees Awarded by School, Level, Major, and Gender  
FY 03 to FY 07 (continued)**

	FY 03			FY 04			FY 05			FY 06			FY 07		
	M	F	Total	M	F	Total	M	F	Total	M	F	Total	M	F	Total
BS Information Technology	20	3	23	14	4	18	16	3	19	31	10	41	31	5	36
BS Software Engr.	N/A	N/A	N/A	3	0	3	8	1	9	5	1	6	4	0	4
MS Computer Science	36	36	72	16	10	26	26	24	50	14	9	23	21	12	33
MS Computer Sci/Info Sci	N/A	N/A	N/A	13	11	24	N/A	N/A	N/A	N/A	N/A	N/A	N/A	N/A	N/A
MS Information Technology	8	17	25	20	16	36	12	15	27	17	10	27	18	9	27
MS Software Engineering	12	3	15	9	5	14	15	3	18	13	6	19	11	2	13
Total Degrees	135	81	216	155	61	216	138	52	190	120	42	162	119	32	151
School % of Total Univ Deg Awd	22%	13%	35%	24%	10%	34%	22%	8%	30%	20%	7%	27%	19%	5%	24%
Annual % Change	26%	45%	33%	15%	(25%)	7%	(11%)	(15%)	(18%)	(13%)	(19%)	(15%)	(1%)	(24%)	(7%)
Technology/Mgt															
Cert Appar/Tex Engr Tech	0	0	0	1	0	1	0	0	0	0	0	0	0	0	0
Cert Project Management	2	1	3	0	0	0	0	0	0	0	0	0	0	0	0
BS Appar Text Tech/Appar Text	10	2	12	6	3	9	8	7	15	2	3	5	4	2	6
BS Applied Sci	0	0	0	1	1	2	0	0	0	0	0	0	2	2	4
BS Computer Engr Tech	16	3	19	25	3	28	16	7	23	25	3	28	16	1	17
BS Electrical Engr. Tech	47	5	52	35	1	36	41	6	47	55	8	63	57	4	61
BS/BA Management/Bus. Adm	17	9	26	34	7	41	23	15	38	16	14	30	19	6	25
BS Mechanical Engr Tech	28	1	29	34	1	35	42	2	44	17	4	21	44	1	45
BS Industrial Engr Tech	29	14	43	28	7	35	24	5	29	37	8	45	31	7	38
BS Telecommunications ET	10	0	10	12	1	13	5	0	5	6	2	8	3	1	4
MS Management/MBA	10	6	16	6	19	25	15	8	23	24	11	35	14	15	29
MS Quality Assurance	22	6	28	18	9	27	9	12	21	15	8	23	10	6	16
MS Engr Tech (Electrical)	7	3	10	13	3	16	11	4	15	7	0	7	8	3	11
MS Systems Engineering	N/A	N/A	N/A	N/A	N/A	N/A	N/A	N/A	N/A	N/A	N/A	N/A	6	0	6
Total Degrees	198	50	248	213	55	268	194	66	260	204	61	265	214	48	262
School % of Total Univ Deg Awd	32%	8%	40%	33%	9%	42%	31%	10%	41%	34%	10%	44%	34%	8%	42%
Annual % Change	7%	16%	9%	8%	10%	8%	(9%)	20%	(3%)	5%	(8%)	2%	5%	(22%)	(1%)

Source: IPEDS Completions Surveys

**Reported Average Starting Salaries of Graduates  
2003-07 (Calendar Year)**

	2003	2004	2005	2006	2007	N in 07
<b>Bachelors</b>						
Applied Science	N/A	N/A	N/A	N/A	\$96,000	1
Architecture	\$35,328	\$40,567	\$38,000	\$39,527	\$46,243	7
Biology	N/A	N/A	N/A	\$37,800	N/A	0
Business Administration	\$49,500	\$50,083	\$41,500	\$33,580	\$52,000	5
Civil Engineering Technology	\$38,064	\$42,924	\$52,250	\$47,194	\$47,097	37
Computer Engineering Technology	\$45,500	\$44,788	\$35,500	\$45,800	\$48,542	7
Computer Science	\$47,245	\$44,200	\$63,300	\$48,825	\$60,306	12
Construction	\$42,500	\$45,111	\$46,500	\$45,838	\$48,810	36
Electrical Engineering Technology	\$46,325	\$46,333	\$79,000	\$54,768	\$50,573	26
Fashion Design/Prod. Dev./Apparel	\$49,500	\$40,172	\$47,008	\$48,516	N/A	0
Industrial Engineering Technology	\$41,196	\$44,707	\$53,250	\$47,851	\$51,364	15
Information Technology	\$41,750	\$45,640	\$42,500	\$34,750	\$51,806	14
International Studies	N/A	N/A	N/A	N/A	\$40,000	1
Math	N/A	\$52,000	N/A	N/A	\$32,000	1
Mechanical Engineering Technology	\$44,198	\$46,233	\$38,000	\$49,574	\$48,372	28
Physics	N/A	\$45,000	\$36,750	\$33,723	N/A	0
Software Engineering	N/A	\$30,000	\$39,500	N/A	\$45,000	1
Surveying and Mapping	\$35,000	\$30,600	\$33,678	N/A	\$48,333	5
Technical and Professional Communication	N/A	\$37,500	\$38,080	\$34,053	\$28,860	2
Telecommunications Engineering Technology	\$38,000	\$50,000	\$55,000	N/A	N/A	0
<b>Masters</b>						
Computer Science	\$48,750	\$58,571	\$71,000	\$74,413	\$80,000	1
Construction Management	\$49,000	\$47,722	\$50,000	\$49,000	\$75,000	1
Engineering Technology (Electrical)	N/A	\$45,000	\$60,500	\$57,333	\$93,000	1
Information Design and Communication	N/A	N/A	N/A	\$90,000	N/A	0
Information Technology	\$52,017	\$63,480	\$57,990	\$54,750	N/A	0
MBA	N/A	\$44,013	\$41,412	\$43,500	N/A	0
Quality Assurance	\$59,333	\$60,000	\$69,500	\$63,475	\$62,444	5
Software Engineering	N/A	\$68,500	\$69,000	\$59,000	N/A	0
Systems Engineering	N/A	N/A	N/A	\$65,000	\$79,000	5
Technical and Professional Communication	\$46,000	\$35,000	\$85,000	\$45,000	N/A	0

Source: Career Services Office

**One Year Retention Rate  
First Time, Full Time Degree-Seeking Freshmen  
SPSU/USG Comprehensive Universities  
Fall 2003 to Fall 2007**

	Fall 2003	Fall 2004	Fall 2005	Fall 2006	Fall 2007
	Cohort 2002	Cohort 2003	Cohort 2004	Cohort 2005	Cohort 2006
SPSU Freshmen Retained at SPSU	69%	68%	69%	72%	76%
SPSU Freshmen Retained in System	79%	78%	77%	81%	84%
Ave. Comprehensive Univ. Freshmen Retained at Institution	72%	72%	71%	72%	73%
Ave. Comprehensive Univ. Freshmen Retained in System	79%	79%	78%	78%	79%

Source: USG Report SRPT670

**Retention and Graduation Rates**  
**First-time, Full-time Freshmen by Major**  
**Fall 2001-2006**

<b>Fall 2001</b>	<b>Number Enrolled</b>	<b>% Retained after 1 year</b>	<b>% Retained after 2 years</b>	<b>% Retained after 3 years</b>	<b>% Grad* in 4 years</b>	<b>% Grad* in 5 years</b>	<b>% Grad* in 6 years</b>
Civil Engineering Technology	25	44%	36%	28%	12%	24%	32%
Computer Engineering Technology	39	67%	39%	28%	10%	23%	31%
Computer Science	89	62%	26%	17%	8%	17%	20%
Construction Management	9	89%	89%	78%	22%	56%	56%
Electrical Engineering Technology	18	33%	17%	17%	0%	6%	6%
Fashion Design/Product Dev. (App/Tex)	9	56%	44%	22%	22%	22%	33%
General Studies/Undeclared	30	20%	3%	0%	7%	17%	20%
Industrial Engineering Technology	4	100%	75%	25%	0%	50%	50%
Management	9	44%	33%	22%	0%	22%	22%
Mathematics	1	0%	0%	0%	0%	0%	0%
Mechanical Engineering Technology	37	76%	46%	27%	5%	11%	11%
Physics	3	67%	67%	33%	0%	0%	0%
Pre-Architecture/Architecture	45	56%	40%	18%	4%	20%	27%
Software Engineering	2	50%	0%	0%	50%	50%	50%
Surveying and Mapping	2	50%	50%	50%	0%	0%	50%
Telecommunications Engineering Technology	10	60%	30%	10%	10%	40%	50%
<b>Fall 2002</b>							
Biology	1	0%	0%	0%	0%	0%	N/A
Civil Engineering Technology	23	65%	39%	39%	4%	30%	N/A
Computer Engineering Technology	29	45%	24%	21%	10%	14%	N/A
Computer Science	73	60%	41%	25%	12%	25%	N/A
Construction Management	14	100%	86%	71%	29%	36%	N/A
Electrical Engineering Technology	22	55%	41%	32%	5%	14%	N/A
Fashion Design/Product Dev. (App/Tex)	5	40%	40%	40%	20%	40%	N/A
General Studies/Undeclared	35	31%	9%	3%	11%	11%	N/A
Industrial Engineering Technology	8	63%	50%	25%	13%	38%	N/A
Information Technology	8	63%	38%	25%	0%	13%	N/A
Management	5	20%	0%	0%	40%	40%	N/A
Mathematics	5	60%	20%	20%	20%	20%	N/A
Mechanical Engineering Technology	50	62%	40%	28%	6%	20%	N/A
Physics	4	100%	75%	50%	50%	50%	N/A
Pre-Architecture/Architecture	57	58%	35%	11%	7%	22%	N/A
Software Engineering	11	64%	27%	18%	9%	9%	N/A
Surveying/Mapping	7	57%	29%	43%	0%	43%	N/A
Technical and Professional Communication	2	100%	0%	0%	0%	50%	N/A
Telecommunications Engineering Technology	5	60%	40%	20%	0%	20%	N/A

\*Graduated either in program they started or another program at SPSU.

Continued on page D-10

**Retention and Graduation Rates**  
**First-time, Full-time Freshmen by Major**  
**Fall 2001-2006 (continued)**

<b>Fall 2003</b>	<b>Number Enrolled</b>	<b>% Retained after 1 year</b>	<b>% Retained after 2 years</b>	<b>% Retained after 3 years</b>	<b>% Grad* in 4 years</b>
Biology	7	86%	14%	14%	0%
Civil Engineering Technology	37	70%	49%	43%	5%
Computer Engineering Technology	28	43%	29%	25%	7%
Computer Science	49	51%	16%	12%	6%
Construction Management	11	73%	27%	36%	9%
Electrical Engineering Technology	40	68%	38%	38%	13%
Fashion Design/Product Dev. (App/Tex)	11	36%	27%	27%	18%
General Studies/Undeclared	52	40%	12%	6%	2%
Industrial Engineering Technology	7	43%	29%	14%	29%
Information Technology	8	38%	25%	38%	13%
International Studies	1	0%	0%	0%	0%
International Technical Communication	1	100%	100%	0%	100%
Management	4	50%	50%	25%	25%
Mathematics	3	67%	68%	33%	0%
Mechanical Engineering Technology	56	82%	43%	18%	2%
Physics	2	50%	50%	0%	0%
Pre-Architecture/Architecture	88	59%	22%	8%	2%
Software Engineering	16	8%	25%	25%	0%
Surveying and Mapping	1	0%	0%	0%	0%
Telecommunications Engineering Technology	2	0%	0%	0%	50%
<b>Fall 2004</b>					
Biology	10	80%	50%	50%	N/A
Civil Engineering Technology	36	61%	44%	31%	N/A
Computer Engineering Technology	30	60%	33%	33%	N/A
Computer Science	41	56%	32%	22%	N/A
Construction Management	24	79%	63%	54%	N/A
Electrical Engineering Technology	39	59%	44%	36%	N/A
Fashion Design/Product Dev. (App/Tex)	1	0%	0%	0%	N/A
General Studies	28	29%	11%	0%	N/A
Industrial Engineering Technology	8	63%	50%	25%	N/A
Information Technology	18	72%	61%	56%	N/A
International Studies	2	100%	0%	0%	N/A
International Technical Communication	1	0%	0%	0%	N/A
Management	12	50%	33%	33%	N/A
Mathematics	2	50%	50%	0%	N/A
Mechanical Engineering Technology	73	67%	47%	32%	N/A
Physics	10	60%	30%	20%	N/A
Pre-Architecture/Architecture	58	47%	17%	7%	N/A
Software Engineering	18	61%	39%	35%	N/A
Surveying/Mapping	2	50%	0%	0%	N/A
Technical and Professional Communication	2	50%	50%	50%	N/A
Telecommunications Engineering Technology	1	0%	0%	0%	N/A

\*Graduated either in program they started or another program at SPSU.

Continued on page D-11

**Retention and Graduation Rates**  
**First-time, Full-time Freshmen by Major**  
**Fall 2001-2006 (continued)**

<b>Fall 2005</b>	<b>Number Enrolled</b>	<b>% Retained After 1 Year</b>	<b>% Retained After 2 Year</b>
Biology	15	47%	36%
Civil Engineering Technology	36	61%	47%
Computer Engineering Technology	27	52%	33%
Computer Science	37	60%	27%
Construction Management	20	65%	45%
Electrical Engineering Technology	25	60%	32%
Fashion Design/Product Dev. (App/Tex)	1	0%	0%
General Studies	38	37%	13%
Industrial Engineering Technology	10	80%	40%
Information Technology	16	63%	33%
International Studies	3	33%	33%
International Technical Communication	1	0%	0%
Management	6	17%	17%
Mathematics	7	57%	33%
Mechanical Engineering Technology	79	68%	42%
Physics	4	75%	75%
Pre-Architecture/Architecture	74	61%	15%
Software Engineering	27	52%	30%
Technical and Professional Communication	2	0%	0%
Telecommunications Engineering Technology	6	68%	33%
<b>Fall 2006</b>			
Biology	8	75%	N/A
Business Administration	4	50%	N/A
Civil Engineering Technology	33	73%	N/A
Computer Engineering Technology	25	72%	N/A
Computer Science	42	67%	N/A
Construction Engineering	5	60%	N/A
Construction Management	9	78%	N/A
Electrical Engineering Technology	18	67%	N/A
English and Professional Communication	1	100%	N/A
Fashion Design/Product Dev. (App/Tex)	4	25%	N/A
General Studies	21	29%	N/A
Industrial Engineering Technology	7	86%	N/A
Information Technology (WEB)	1	0%	N/A
Information Technology	11	91%	N/A
International Studies	5	60%	N/A
Management	5	80%	N/A
Mathematics	5	80%	N/A
Mechanical Engineering Technology	60	68%	N/A
Mechatronics Engineering	2	100%	N/A
Pre-Architecture/Architecture	61	72%	N/A

Continued on page D-12

**Retention and Graduation Rates**  
**First-time, Full-time Freshmen by Major**  
**Fall 2001-2006 (continued)**

Software Engineering	23	57%	N/A
Technical and Professional Communication	1	0%	N/A
Telecommunications Engineering Technology	4	75%	N/A

\*Graduated either in program they started or another program at SPSU.



**Bachelor's Degree 6 Year Graduation Rates  
SPSU vs. USG Comprehensive Universities  
First Time, Full Time Freshmen Entering Fall Cohorts 1997-2001**

	Fall 1997	Fall 1998	Fall 1999	Fall 2000	Fall 2001
% Freshmen graduating from SPSU in 6 years	23%	23%	24%	25%	24%
% Freshmen graduating from own USG Comprehensive University in 6 years	29%	30%	32%	34%	35%
% SPSU Freshmen graduating from any USG Comprehensive University in 6 years	32%	31%	34%	37%	37%
% Freshmen graduating from any USG Comprehensive University in 6 years	36%	38%	40%	42%	43%

Source: USG Report SRPT 660

**4, 5, and 6 Year Graduation Rates  
First Time, Full Time Entering Fall Cohort 2001  
By Race/Ethnicity**

Bachelors Degree Seekers In Four Year Programs	Entered Fall 2001	Completed Degree in 4 Yrs. or Less	Completed Degree in 5 Years	Completed Degree in 6 Years	Completed Degree in 4-6 Years	Six Year Graduation Rate
<b>Males</b>						
Non-Resident Alien	5	1	0	1	2	40.0%
Black	43	1	2	3	6	14.0%
American Indian	1	0	0	0	0	0.0%
Asian	18	1	5	1	7	38.9%
Hispanic	6	1	0	0	1	16.7%
White	245	14	27	14	55	22.4%
Total	318	18	34	19	71	22.3%
<b>Females</b>						
Non-Resident Alien	0	0	0	0	0	N/A
Black	13	3	5	1	9	69.2%
American Indian	0	0	0	0	0	N/A
Asian	4	0	1	0	1	25.0%
Hispanic	1	0	1	0	1	100%
White	18	1	1	1	3	16.7%
Total	36	4	8	2	14	38.9%
<b>Total</b>						
Non-Resident Alien	5	1	0	1	2	40.0%
Black	56	4	7	4	15	26.8%
American Indian	1	0	0	0	0	0.0%
Asian	22	1	6	1	8	36.4%
Hispanic	7	1	1	0	2	28.6%
White	263	15	28	15	58	22.1%
Total	354	22	42	21	85	24.0%

Source: IPEDS Graduation Rate Survey



# SOUTHERN POLYTECHNIC STATE UNIVERSITY

## Faculty/Staff Information

Full-time Faculty by Rank .....	E-1
Average Full Time Faculty Salaries by Rank and Gender .....	E-2
Percentage of Full Time Faculty with Tenure .....	E-3
Percentage of Full Time Faculty by Gender .....	E-3
Percentage of Employees by Assigned Position .....	E-3
USG Full Time Faculty by Gender and Race 2007 .....	E-4



**Full Time Faculty by Rank  
Fall 2003-2007**

	Fall 2003	Fall 2004	Fall 2005	Fall 2006	Fall 2007
Full Professor	43	42	37.5	41	48
Associate	52	52	49.5	45.5	42
Assistant	24	19	25	34	48
Lecturer	5	5	7	10.5	9
Temporary (Instr)	9	13	21	13	11
Total FT	133	131	140	144	158

Source: Vice President Academic Affairs/AAUP Faculty Compensation Survey

**Average Full Time Faculty Salaries by Rank and Gender  
Fall 2003-07**

**Table One**

	Fall 2003	Fall 2004	Fall 2005	Fall 2006	Fall 2007
Full Professor					
Male	\$68,404	\$71,391	\$69,353	\$73,198	\$78,420
Female	\$66,503	\$68,322	\$71,970	\$71,171	\$71,458
Associate					
Male	\$60,434	\$61,335	\$60,422	\$62,496	\$63,597
Female	\$54,865	\$55,364	\$55,576	\$58,476	\$60,052
Assistant					
Male	\$51,475	\$50,171	\$53,386	\$53,143	\$55,101
Female	\$46,258	\$45,594	\$49,792	\$53,500	\$52,362
Lecturer					
Male	\$43,800	\$44,043	\$45,378	\$42,364	\$45,979
Female	\$46,250	\$46,753	\$41,271	\$41,610	\$42,018
Temporary					
Male	\$42,333	\$44,833	\$46,420	\$47,014	\$46,935
Female	N/A	\$45,000	\$39,616	\$44,051	\$40,638

**Average Full Time Faculty Salaries by Rank and Gender  
Fall 2007**

**Table Two**

	Professor	Associate	Assistant	Lecturer	Temporary
Female	\$71,458	\$60,052	\$52,362	\$42,018	\$40,638
Male	\$78,420	\$63,597	\$55,101	\$45,979	\$46,935

Source: Vice President Academic Affairs/AAUP Faculty Compensation Survey

**Percentage of Full Time Faculty with Tenure  
Fall 2003-2007**

**Table One**

	Fall 2003	Fall 2004	Fall 2005	Fall 2006	Fall 2007
Tenure	67%	66%	59%	57%	52%

**Percentage of Full Time Faculty by Gender  
Fall 2003-07**

**Table Two**

	Fall 2003	Fall 2004	Fall 2005	Fall 2006	Fall 2007
Female	17%	18%	20%	24%	27%
Male	83%	82%	80%	76%	73%

**Percentage of Employees by Assigned Position  
Fall 2003-07**

**Table Three**

	Fall 2003	Fall 2004	Fall 2005	Fall 2006	Fall 2007
Exec/Admin/Man.	7%	11%	11%	11%	10%
Faculty	50%	49%	47%	48%	49%
Other Professional (Support/Services)	16%	13%	14%	12%	13%
Technical/Paraprofessional	2%	2%	3%	3%	3%
Clerical/Secretarial	13%	14%	13%	12%	12%
Skilled Crafts	3%	2%	3%	2%	1%
Service/Maintenance	9%	9%	9%	12%	12%

Source: Tables One and Two-Vice President Academic Affairs/AAUP Faculty Compensation Survey

Source: Table Three- IPEDS Human Resources Survey

**University System of Georgia  
Full-time Faculty by Gender and Race  
Fall 07**

<b>Institutions</b>	<b>Faculty</b>	<b>Male</b>	<b>Female</b>	<b>Black</b>	<b>White</b>	<b>Other*</b>
Georgia Institute of Technology	970	789	181	35	723	212
Georgia State University	1126	608	518	107	892	127
Medical College of Georgia	644	408	236	41	483	120
University of Georgia	1822	1234	588	99	1528	195
<b>Research Universities</b>	<b>4562</b>	<b>3039</b>	<b>1523</b>	<b>282</b>	<b>3626</b>	<b>654</b>
Georgia Southern University	755	407	348	52	638	65
Valdosta State University	528	281	247	26	465	37
<b>Regional Universities</b>	<b>1283</b>	<b>688</b>	<b>595</b>	<b>78</b>	<b>1103</b>	<b>102</b>
Albany State University	180	93	87	115	40	25
Armstrong Atlantic State University	296	142	154	23	252	21
Augusta State University	270	129	141	25	232	13
Clayton College & State University	207	101	106	34	152	21
Columbus State University	301	150	151	37	231	33
Fort Valley State University	122	77	45	70	30	22
Georgia College & State University	306	154	152	14	265	27
Georgia Southwestern State University	113	56	57	12	92	9
Kennesaw State University	748	382	366	78	593	77
North Georgia College & State University	233	120	113	2	212	19
Savannah State University	136	79	57	71	32	33
Southern Polytechnic State University	168	123	45	13	122	33
University of West Georgia	424	220	204	23	352	49
<b>Comprehensive Universities</b>	<b>3504</b>	<b>1826</b>	<b>1678</b>	<b>517</b>	<b>2605</b>	<b>382</b>

\*Other includes Asian/Pacific Islanders, American Indian/Alaskan Natives, and Hispanics





# SOUTHERN POLYTECHNIC STATE UNIVERSITY

## Financial Information

Revenues and Expenditures .....	F-1
Total Operating Revenues .....	F-2
Total Non-Operating Revenues .....	F-3
Total Operating Expenses .....	F-4
Operating Expenses by Natural Classification .....	F-5
Operating Expenses by Natural Classification (Pie Charts) .....	F-6
Terms of Annual Giving .....	F-7
Contributions to Annual Fund .....	F-7
Annual Fund Total .....	F-7
Market Value of Endowment .....	F-7
Financial Aid Awards .....	F-8
USG Freshmen with HOPE Scholarships .....	F-9
USG Undergraduates with HOPE Scholarships .....	F-10

# Financial Information

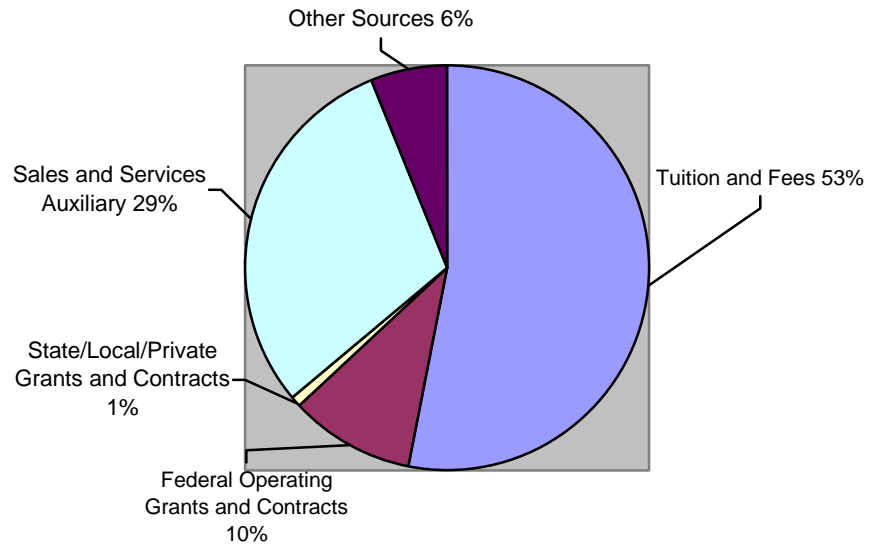


**Revenues and Expenditures  
FY 2006 and FY 2007**

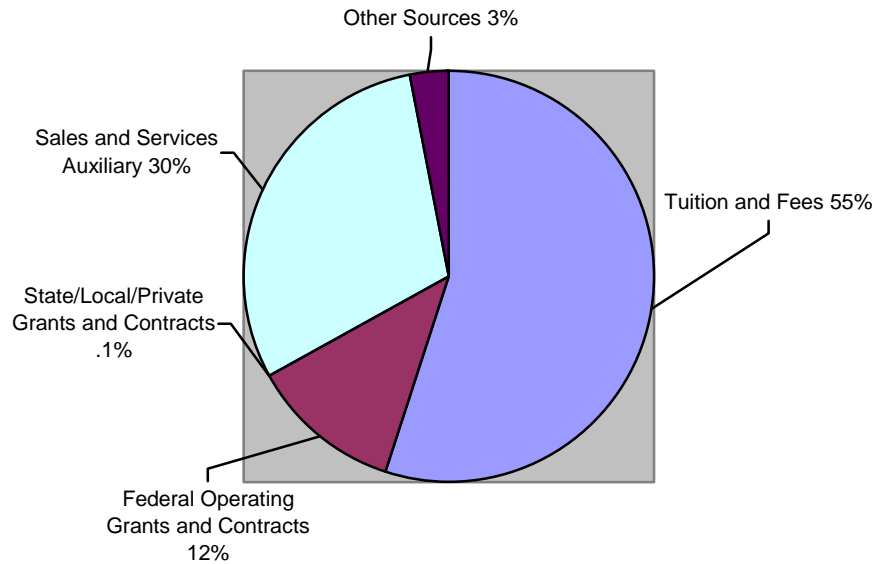
<b>Operating Revenues</b>	<b>FY 2006</b>	<b>FY 2007</b>
Tuition and fees after deducting discounts and allowances Grants and contracts - operating	\$ 11,561,954	\$ 13,712,299
Federal operating grants and contracts	\$ 2,288,833	\$ 2,771,044
State operating grants and contracts	\$ 175,874	\$ 21,030
Local/private operating grants and contracts	\$ 72,413	\$ 149,085
Sales & services of auxiliary enterprises after deducting discounts and allowances	\$ 6,411,786	\$ 7,453,059
Other sources	\$ 1,297,260	\$ 967,610
<b>Total Operating Revenues</b>	<b>\$ 21,808,120</b>	<b>\$ 25,074,127</b>
<b>Non-operating Revenues/Grants-Non-operating</b>		
State appropriations	\$ 19,819,607	\$ 20,256,982
Federal non-operating grants	\$ 50,119	\$ 0
State non-operating grants	\$ 35,108	\$ 0
Local non-operating grants	\$ 17,108	\$ 0
Gifts including contributions from affiliated organizations	\$ 503,332	\$ 669,606
Investment income	\$ 106,609	\$ 381,398
Other non-operating revenues	\$ (1,673,341)	\$(1,645,575)
<b>Total non-operating revenues</b>	<b>\$ 18,858,542</b>	<b>\$19,662,411</b>
<b>Other Revenues and Additions</b>		
Capital grants and gifts	\$ 2,790,567	\$ 683,435
<b>TOTAL ALL REVENUES AND OTHER ADDITIONS</b>	<b>\$ 43,457,229</b>	<b>\$45,419,973</b>
<b>Operating Expenses</b>		
Instruction	\$ 18,381,630	\$19,365,144
Research	\$ 141,366	\$ 228,354
Public Service	\$ 307	\$ 0
Academic Support	\$ 2,991,562	\$ 3,441,709
Student Services	\$ 3,268,583	\$ 3,501,590
Institutional Support	\$ 6,270,644	\$ 6,410,029
Operation and maintenance of plant	\$ 5,494,314	\$ 4,758,754
Depreciation	\$ 0	\$ 524,931
Scholarships and fellowships expenses, excluding discounts & allowances (do not include work study)	\$ 1,351,408	\$ 2,065,254
Auxiliary enterprises	\$ 3,014,855	\$ 5,232,099
<b>TOTAL OPERATING EXPENSES</b>	<b>\$ 40,914,669</b>	<b>\$45,527,864</b>

Source: IPEDS Finance Survey

**Total Operating Revenues FY 2006**

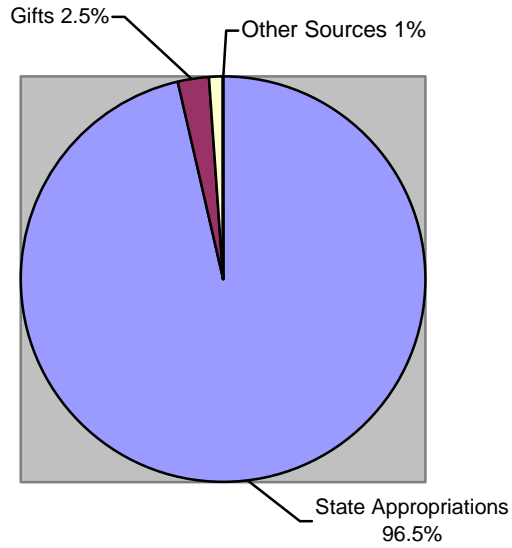


**Total Operating Revenues FY 2007**

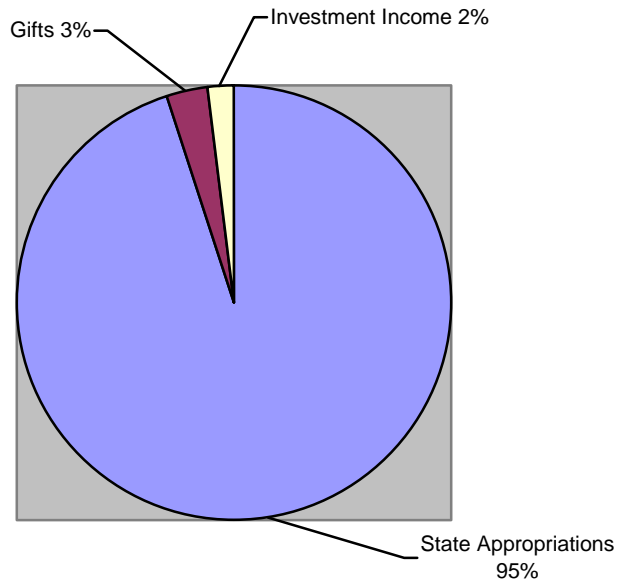


Source: IPEDS Finance Survey

**Total Non-Operating Revenues/Grants FY 2006**

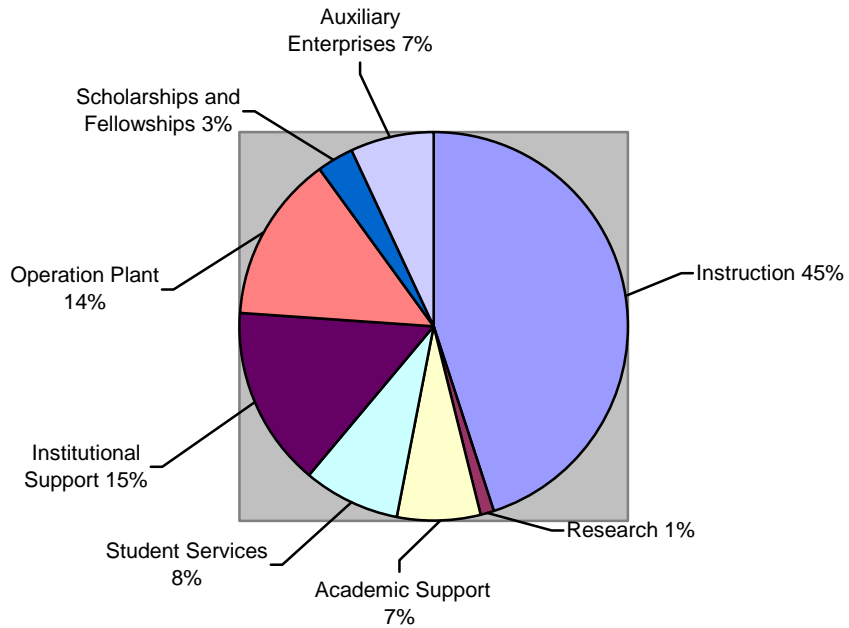


**Total Non-Operating Revenues/Grants FY 2007**

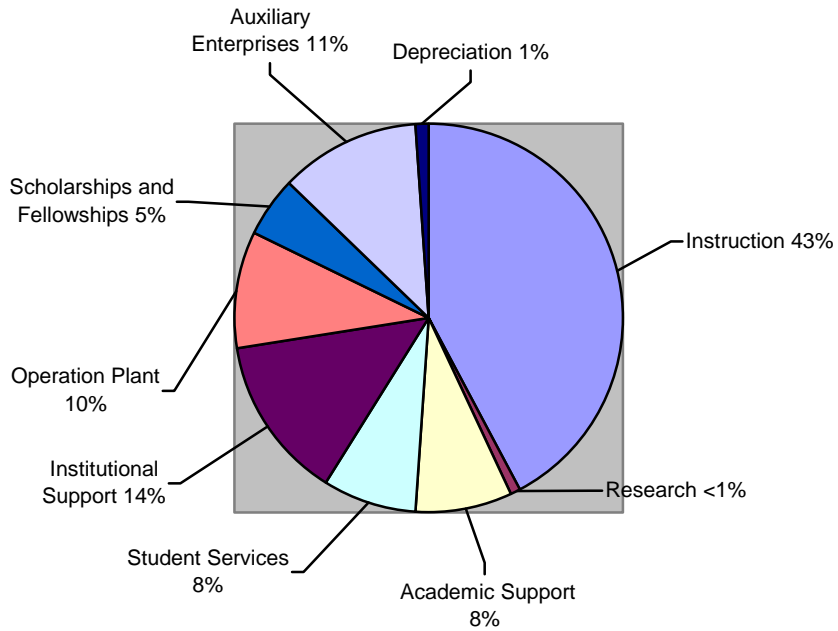


Source: IPEDS Finance Survey FY 06 and FY 07

**Total Operating Expenses FY 2006**



**Total Operating Expenses FY 2007**



Source: IPEDS Finance Survey

**Operating Expenses by Natural Classification  
FY 2006**

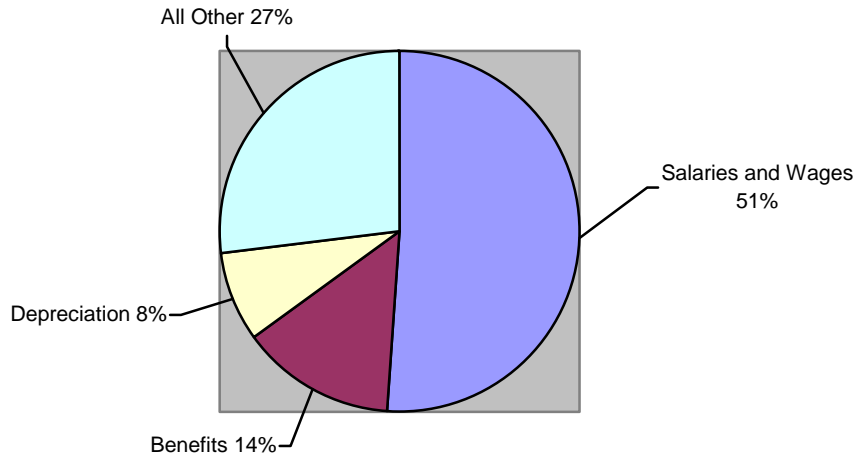
	Total	Salaries and Wages	Employee Fringe Benefits	Depreciation	All Other
Instruction	\$ 18,381,630	\$ 12,196,002	\$ 2,682,384	\$ 1,834,225	\$ 1,669,019
Research	\$ 141,366	\$ 69,953	\$ 6,068	\$ 0	\$ 65,345
Public Service	\$ 307	\$ 304	\$ 3	\$ 0	\$ 0
Academic Support	\$ 2,991,562	\$ 1,901,999	\$ 417,742	\$ 39,639	\$ 632,182
Student Services	\$ 3,268,583	\$ 1,790,008	\$ 412,127	\$ 5,254	\$ 1,061,194
Institutional Support	\$ 6,270,644	\$ 3,199,493	\$ 1,880,872	\$ 116,259	\$ 1,074,020
Operation/Plant Maint.	\$ 5,494,314	\$ 1,415,867	\$ 399,780	\$ 311,901	\$ 3,366,766
Scholarships/Fellowships	\$ 1,351,408	\$ 0	\$ 0	\$ 0	\$ 1,351,408
Auxiliary Enterprises	\$ 3,014,855	\$ 461,696	\$ 135,573	\$ 784,494	\$ 1,633,092
<b>Total Operating Expenses</b>	<b>\$ 40,914,669</b>	<b>\$ 21,035,322</b>	<b>\$ 5,934,549</b>	<b>\$ 3,091,772</b>	<b>\$ 10,853,026</b>

**Operating Expenses by Natural Classification  
FY 2007**

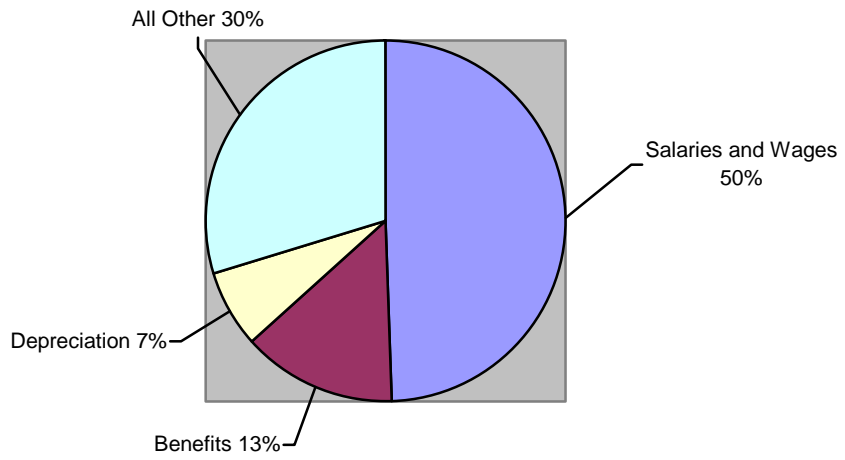
	Total	Salaries and Wages	Employee Fringe Benefits	Depreciation	All Other
Instruction	\$ 19,365,144	\$ 13,167,528	\$ 2,951,511	\$ 1,138,067	\$ 2,108,038
Research	\$ 228,354	\$ 66,958	\$ 17,050	\$ 0	\$ 144,346
Public Service	\$ 0	\$ 0	\$ 0	\$ 0	\$ 0
Academic Support	\$ 3,441,709	\$ 2,109,498	\$ 462,283	\$ 37,619	\$ 832,309
Student Services	\$ 3,501,590	\$ 1,822,873	\$ 431,766	\$ 8,946	\$ 1,238,005
Institutional Support	\$ 6,410,029	\$ 3,291,513	\$ 1,659,236	\$ 131,209	\$ 1,328,071
Operation/Plant Maint.	\$ 4,758,754	\$ 1,662,387	\$ 484,617	\$ 303,283	\$ 2,308,467
Depreciation	\$ 524,931	\$ 0	\$ 0	\$ 524,931	\$ 0
Scholarships/Fellowships	\$ 2,065,254	\$ 0	\$ 0	\$ 0	\$ 2,065,254
Auxiliary Enterprises	\$ 5,232,099	\$ 613,690	\$ 157,978	\$ 853,589	\$ 3,606,842
<b>Total Operating Expenses</b>	<b>\$45,527,864</b>	<b>\$22,734,447</b>	<b>\$ 6,164,441</b>	<b>\$ 2,997,644</b>	<b>\$13,631,332</b>

Source: IPEDS Finance Report

**Operating Expenses by Natural Classification FY 2006**



**Operating Expenses by Natural Classification FY 2007**



Source: IPEDS Finance Survey



**Terms of Annual Giving  
FY03-FY07**

	<b>FY 03</b>	<b>FY 04</b>	<b>FY 05</b>	<b>FY 06</b>	<b>FY 07</b>
Unrestricted	\$161,032	\$325,047	\$171,270	\$438,025	\$1,262,994
Restricted	\$294,041	\$535,363	\$510,854	\$1,675,312	\$449,254

**Contributions to Annual Fund  
FY03-FY07**

	<b>FY 03</b>	<b>FY 04</b>	<b>FY 05</b>	<b>FY 06</b>	<b>FY 07</b>
Other Organizations	\$32,621	\$46,066	\$12,886	\$2,920	\$0
Other Individuals	\$78,776	\$75,258	\$63,363	\$173,597	\$233,113
Foundations	\$33,629	\$46,237	\$7,850	\$922,500	\$15,100
Faculty/Staff	\$51,847	\$53,972	\$61,885	\$51,538	\$50,415
Business/Corp	\$182,520	\$586,078	\$394,129	\$756,598	\$1,322,870
Alumni	\$71,407	\$52,799	\$142,011	\$206,184	\$90,749

**Annual Fund Total  
FY03-FY07**

	<b>FY 03</b>	<b>FY 04</b>	<b>FY 05</b>	<b>FY 06</b>	<b>FY 07</b>
Annual Fund Total	\$450,799	\$860,410	\$682,124	\$2,113,337	\$1,712,248

**Market Value of Endowment as of June 30  
FY03-FY07**

	<b>FY 03</b>	<b>FY 04</b>	<b>FY 05</b>	<b>FY 06</b>	<b>FY 07</b>
SPSU Foundation	\$808,547	\$823,044	\$1,988,843	\$2,754,184	\$3,587,293
Board of Regents Fund	\$2,852,109	\$2,994,347	\$2,952,576	\$2,856,702	\$3,115,539

Source: Advancement Office/VP Business Office (BOR Fund only)

**Financial Aid Awards  
FY 03-07**

	<b>FY 03</b>	<b>FY 04</b>	<b>FY 05</b>	<b>FY 06</b>	<b>FY 07</b>
Federal Work Study	\$ 84,651	\$ 117,329	\$ 40,502	\$ 68,842	\$ 64,088
Other Scholarships	\$ 543,638	\$ 439,744	\$ 434,155	\$ 448,967	\$ 603,119
HOPE Scholarships	\$ 2,078,579	\$ 2,530,093	\$ 2,998,589	\$ 3,130,008	\$ 3,495,417
Grants	\$ 1,379,466	\$ 1,648,100	\$ 1,954,572	\$ 2,099,324	\$ 2,509,855
Loans	\$ 5,643,916	\$ 6,181,253	\$ 7,459,051	\$ 9,006,183	\$10,543,412

Source: Financial Aid Office

**University System of Georgia  
Percentage of First-Time Freshmen with HOPE Scholarship  
Fall 2003-Fall 2006\***

	<b>Fall 2003</b>	<b>Fall 2004</b>	<b>Fall 2005</b>	<b>Fall 2006</b>
Georgia Institute of Technology	97%	94%	97%	97%
Georgia State University	94%	90%	94%	94%
University of Georgia	99%	98%	98%	98%
Research University Average	97%	94%	96%	97%
Georgia Southern University	87%	84%	86%	88%
Valdosta State University	87%	83%	83%	84%
Regional University Average	87%	84%	85%	86%
Albany State University	73%	75%	77%	74%
Armstrong Atlantic State University	77%	69%	77%	75%
Augusta State University	70%	64%	70%	68%
Clayton College and State University	75%	68%	76%	78%
Columbus State University	82%	78%	78%	78%
Fort Valley State University	66%	65%	66%	59%
Georgia College and State University	90%	93%	95%	97%
Georgia Southwestern State University	85%	81%	80%	76%
Kennesaw State University	87%	90%	87%	89%
North Georgia College and State Univ.	90%	86%	89%	87%
Savannah State University	67%	63%	57%	61%
Southern Polytechnic State University	78%	78%	86%	88%
University of West Georgia	86%	82%	90%	87%
Comprehensive University Average	81%	65%	81%	81%

\* Fall 2007 not available from the USG

**University System of Georgia  
Percentage of Undergraduate HOPE Scholarship Recipients  
Fall 2005 and Fall 2006\***

	Fall 2005	Fall 2006
Georgia Institute of Technology	38%	61%
Georgia State University	38%	39%
Medical College of Georgia	47%	45%
University of Georgia	62%	71%
Research University Average	49%	58%
Georgia Southern University	41%	40%
Valdosta State University	45%	49%
Regional University Average	42%	43%
Albany State University	29%	31%
Armstrong Atlantic State University	26%	28%
Augusta State University	27%	28%
Clayton College and State University	21%	23%
Columbus State University	30%	34%
Fort Valley State University	24%	28%
Georgia College and State University	51%	57%
Georgia Southwestern State University	33%	34%
Kennesaw State University	33%	38%
North Georgia College and State Univ.	46%	50%
Savannah State University	24%	27%
Southern Polytechnic State University	26%	29%
University of West Georgia	39%	40%
Comprehensive University Average	32%	36%

\* Fall 2007 not available from the USG



# SOUTHERN POLYTECHNIC STATE UNIVERSITY

## Facilities Information

Building and Content Values .....	G-1
Lawrence V. Johnson Library .....	G-3
Class Level by Class Size	
Fall 2006 .....	G-4
Spring 2007 .....	G-4
Summer 2007 .....	G-4
Fall 2007 .....	G-5
Spring 2008 .....	G-5
Student Enrolled Hours by Time .....	G-6
Campus Map .....	G-7



## Building and Content Values FY 08

Building	Year Built	Square Feet	Stories	Sprink	ISO Const Code	ISO Occ Code	Building Value	Content Value
A- Wilson Student Center	1977	86,243	2	Y	6	25	\$ 22,164,451	\$ 1,650,000
B- Administration Bldg	1961	16,620	2	N	6	8	\$ 3,706,260	\$ 338,129
C- Lawrence Johnson Library	1966	58,175	3	Y	6	25	\$ 14,950,975	\$ 1,250,000
D- Classroom Bldg.	1961	28,595	2	N	6	25	\$ 7,348,915	\$ 224,000
E- Crawford Lab Bldg.	1961	31,158	2	N	6	25	\$ 8,007,606	\$ 1,500,000
G- Elec & Comp Eng Tech	1961	35,036	2	N	6	25	\$ 9,004,252	\$ 665,000
H- Burruss Academic Bldg.	1984	50,500	3	N	6	25	\$ 12,978,500	\$ 2,500,000
I- Old Architecture Bldg.	1961	35,027	2	N	6	25	\$ 9,001,939	\$ 50,000
J- Atrium Bldg.	2000	103,608	3	Y	6	25	\$ 26,627,256	\$ 1,350,000
K- Clarence Arnston MET Bldg.	1961	34,677	1	N	6	25	\$ 8,911,989	\$ 1,682,000
M- Claire Harris ATET	1988	31,673	1	N	6	25	\$ 8,139,961	\$ 522,000
N- School of Architecture	2002	87,219	4	Y	6	25	\$ 22,415,283	\$ 1,100,000
S- Howell Hall	1966	57,722	4	Y	6	4	\$ 11,313,512	\$ 188,800
V- Norton Hall	1964	47,146	4	Y	6	4	\$ 9,240,616	\$ 300,000
EA-Courtyard 1000	2004	61,404	3	Y	1	4	\$ 1,964,928	\$ 251,422
EB-Courtyard 2000	2004	55,770	3	Y	1	4	\$ 1,784,640	\$ 251,422
EC-Courtyard 3000	2004	60,753	3	Y	1	4	\$ 1,944,096	\$ 251,422
EE-Community Center	2004	2,320	1	Y	1	25	\$ 74,240	\$ 11,247
EF-Housing Office	2004	4,007	1	Y	1	8	\$ 140,245	\$ 42,580
EG-Post Office	2000	1,266	1	Y	1	8	\$ 40,512	\$ 23,600
EI-Commons 100	2000	18,366	2	Y	1	4	\$ 587,712	\$ 270,000
EJ-Commons 200	2000	18,366	2	Y	1	4	\$ 587,712	\$ 270,000
EK-Commons 300	2000	18,366	2	Y	1	4	\$ 587,712	\$ 270,000
EL Commons 400	2000	18,366	2	Y	1	4	\$ 587,712	\$ 270,000
EM-Commons 500	2000	24,930	2	Y	1	4	\$ 797,760	\$ 300,000
EN-Commons 600	2000	24,930	2	Y	1	4	\$ 797,760	\$ 300,000
EP- Facilities Administration	2001	5,626	1	N	3	8	\$ 258,796	\$ 170,000
EQ- Cart/Dead File Storage	2001	1,267	1	N	3	6	\$ 48,146	\$ 100,000
ER- Small Vehicle Shed	2001	3,000	1	N	3	6	\$ 114,000	\$ 150,000
ES- Facilities Grounds Bldg	2001	2,520	1	N	3	25	\$ 95,760	\$ 130,000
ET- Hazardous Mat. Storage	2002	236	1	N	3	6	\$ 8,968	\$ 0
EU- Facilities Lg Vehicle Shed	2002	1,548	1	N	3	6	\$ 58,824	\$ 170,000
EV- Facilities Maintenance Bldg	2001	12,156	1	N	3	25	\$ 461,928	\$ 225,000
EX- Facilities Central Receiving	1985	7,200	1	N	3	6	\$ 273,600	\$ 200,000
NC- Rec & Wellness Center	1996	35,948	1	Y	6	25	\$ 9,238,636	\$ 373,000
SJ- Civil Eng Tech Bldg	1977	13,448	1	Y	6	25	\$ 3,456,136	\$ 350,000
SK- Civil Eng Soils Lab	1993	1,800	1	N	6	25	\$ 462,600	\$ 100,000
SL- Student Competition Bldg.	2005	8663	1	Y	3	25	\$ 398,498	\$ 2,000
SM- Wilder Comm. Bldg	1984	4,010	1	N	3	25	\$ 184,460	\$ 300,000
SP- SPSU Gymnasium	1966	29,182	2	N	6	25	\$ 7,499,774	\$ 80,000
WA- Facilities Grounds Bldg.	1995	720	1	N	2	6	\$ 33,120	\$ 25,000

Continued on Page G-2

**Building and Content Values  
FY 08 (continued)**

WB- Concession/Restroom Bldg	1995	864	1	N	2	25	\$ 39,744	\$ 0
WE- Elks Lodge	1955	10,100	1	N	4	25	\$ 1,191,800	\$ 0
WF-Elks Lodge Scout Hut	1960	840	1	N	1	25	\$ 26,880	\$ 0
WG-Elks Lodge Pool Bldg.	1955	550	1	N	2	6	\$ 25,300	\$ 0
SP1, 2, 3- Baseball Shed/Stor	1966	594	1	N	1	6	\$ 21,384	\$ 10,000
TOTALS	N/A	N/A	N/A	N/A	N/A	N/A	\$ 207,951,554	\$18,426,622

Source: Facilities Department



**Lawrence V. Johnson Library  
FY 2002–FY 2007**

	FY02	FY04	FY05	FY06	FY07
<b>Holdings</b>					
Books/Other Materials	119,780	120,764	119,917	121,621	123,489
Periodicals/Newspapers	1,256	1,124	1,114	1,120	1,024
Microforms	57,144	57,570	57,590	3,717	3,482
Audiovisual materials	82	52	58	85	95
On-line Databases	9	9	8	7	7
Volumes Added During Year	6,108	2,182	(847)	1,704	1,868
<b>Services</b>					
<i>Circulation Transactions</i>					
General Collection	15,542	13,913	11,884	13,244	8,850
Reserve Collection	7,887	9,095	7,864	8,340	1,230
<i>Document delivery/Interlibrary Loan</i>					
Provided to other libraries	1,385	1,349	464	806	790
Received from other libraries	451	289	161	139	233
GIL Express	N/A	N/A	N/A	N/A	1,010
GIL Express Remote	N/A	N/A	N/A	N/A	997
<i>Information service to groups</i>					
Number of presentations	13	22	25	23	26
Number of persons served	257	371	437	392	416
<i>Public Service Hours/Week</i>	80	80	80	80	80
<i>Gate Count/Week</i>	2,802	3,385	2450	2,534	2,722
<i>Reference Transactions/Week</i>	17	58	46	38	30

Source: SPSU Library

**Class Level by Class Size  
Fall 2006**

	<b>1-9</b>	<b>10-19</b>	<b>20-29</b>	<b>30-39</b>	<b>40-49</b>	<b>50+</b>
0000	0	0	2	2	0	0
1000	62	39	61	52	9	4
2000	16	27	69	52	11	1
3000	38	44	36	23	1	2
4000	38	35	23	14	0	0
5000*	16	0	0	1	0	0
Graduate	47	36	9	0	0	0

\*Architecture

**Class Level by Class Size  
Spring 2007**

	<b>1-9</b>	<b>10-19</b>	<b>20-29</b>	<b>30-39</b>	<b>40-49</b>	<b>50+</b>
0000	0	0	1	2	1	0
1000	63	38	42	48	9	1
2000	28	30	65	60	9	1
3000	39	36	57	17	5	1
4000	59	34	39	6	1	0
5000*	12	0	2	0	0	0
Graduate	65	23	19	1	0	0

\*Architecture

**Class Level by Class Size  
Summer 2007**

	<b>1-9</b>	<b>10-19</b>	<b>20-29</b>	<b>30-39</b>	<b>40-49</b>	<b>50+</b>
0000	0	0	1	1	0	0
1000	50	19	9	6	0	1
2000	17	21	28	14	0	1
3000	29	20	18	4	0	0
4000	36	21	10	2	0	0
5000*	4	2	0	0	0	0
Graduate	37	19	3	0	0	0

\*Architecture

Continued on page G-5

**Class Level by Class Size  
Fall 2007**

	1-9	10-19	20-29	30-39	40-49	50+
0000	0	0	1	1	2	0
1000	38	40	61	49	15	6
2000	18	32	80	57	13	2
3000	35	51	51	22	3	0
4000	56	35	26	7	0	0
5000*	12	0	0	1	0	0
Graduate	45	37	13	1	0	0

\*Architecture

**Class Level by Class Size  
Spring 2008**

	1-9	10-19	20-29	30-39	40-49	50+
0000	0	0	2	2	0	0
1000	43	39	56	35	13	2
2000	22	48	71	56	14	1
3000	36	49	49	17	8	1
4000	52	50	26	10	0	0
5000*	15	3	2	0	0	0
Graduate	59	37	15	2	0	0

\*Architecture

**Student Enrolled Hours by Time  
Fall 2006 to Spring 2008**

	<b>Fall 2006</b>	<b>Spring 2007</b>	<b>Summer 2007</b>	<b>Fall 2007</b>	<b>Spring 2008</b>
Morning	14,200	13,464	2,789	14,675	12,955
Afternoon	16,670	16,677	5,612	19,045	19,338
Evening	13,546	14,190	5,610	14,105	14,855
No Time Assigned	2,451	2,572	2,020	3085	3170
Total	46,867	46,903	16,031	50,910	50,318



- A. Joe Mack Wilson Student Center
- B. Administration Building
- C. Lawrence V. Johnson Library
- D. Classroom Building D
- E. Crawford Laboratory Building
- EE. University Commons Apartments
- EF. Courtyard Apartments
- EG. Leasing Office & Community Center
- EP. Facilities Administration
- ES. Grounds & Vehicles Shop
- EV. Maintenance Shop
- EX. Central Receiving
- F. Continuing Education
- G. Electrical & Computer Engineering Technology
- H. Academic H
- J. Atrium Building J
- K. Clarence Arnston Mechanical Engineering Technology
- M. W. Clair Harris Textile Center
- NC. Recreation & Wellness Center
- N. Architecture
- P. Visitor Parking
- S. Howell Residence Hall
- SJ. Civil Engineering Technology
- SM. Wilder Communication Center
- SP. Gymnasium
- V. Norton Residence Hall
- 1. Globe
- 2. The "Rock"
- 3. Hornets Baseball Field
- 4. Recreation Fields
- 5. Tennis Courts

