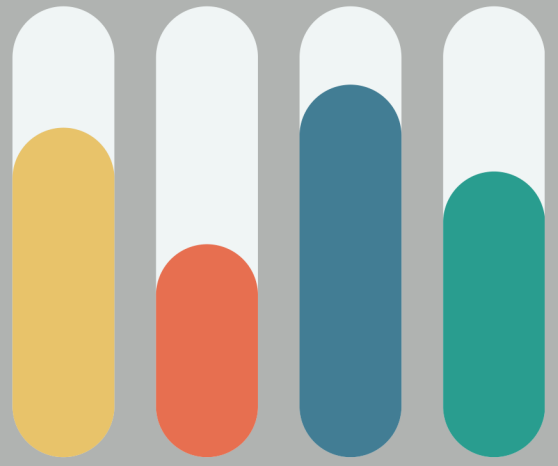


4 TYPES OF STUDENT DATA ANALYTICS

Descriptive

What?

Are students engaged with the course content?
Are most students turning in assignments on time?
What is my grade distribution?



Diagnostic

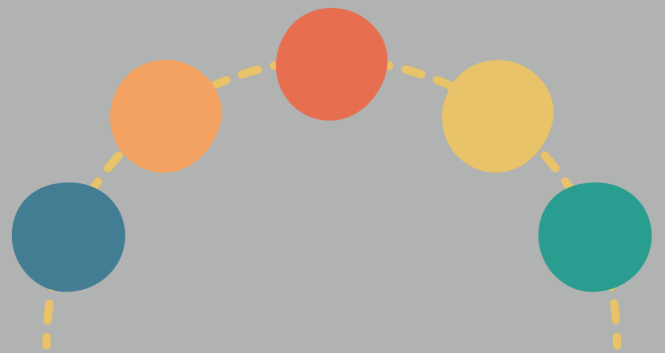
Why?

Why have several students missed this question?
Why was the Quiz 3 average lower than the Quiz 2 average?
Why has this student missed so many assignments?

Predictive

What will be?

What outcome can I expect?
What will happen if I make no changes?
What might change the trajectory?



Prescriptive

What action can I take?

How can I impact student performance?
What resources can I access?
How do I improve student communication?

Takeaways

To use student data effectively...

Analyze student performance.
Look for trends in the data.
Consider next steps.
Make an action plan.

